



weather defence **sales launch pack**

july 2023

Disclaimer

Products manufactured and systems designed by Etex Australia Pty Ltd and branded Siniat, are produced in accordance with the Building Code of Australia and relevant Australian Standards. Information in this document is to be used as a guide only and is subject to project approval as many aspects of construction are not comprehensively covered. It is the responsibility of the project to determine if our products and systems are suitable for the intended application and they meet the relevant building code and project requirements. It is also the projects responsibility to ensure third party products have the appropriate certification with Siniat products and systems. Etex Australia Pty Ltd will not be held responsible for any claims resulting from the installation of its products or other associated products not in accordance with the recommendations of the manufacturer's technical literature or relevant Australian Standards, or for situations not covered by our certification reports.

Siniat technical information is regularly updated. To ensure this document is current with the latest information, visit:

www.siniat.com.au

or contact Siniat's Customer Service Centre on

1300 724 505

Warranty

Siniat products are covered by a 10 Year Warranty.

Visit

www.siniat.com.au/warranty

July 2023



contents

introduction	2
application	3
installation benefits	4
weather defence™ components	5
key selling propositions & competitive advantages	6
FAQ's	7
marketing support material	8



introduction

Siniat **weather defence™** is a **rigid air barrier** which is used behind facade cladding systems to create a pressure equalised cavity. It has transformed building envelope construction and performance.

The design benefits it brings include:

- > Compliant for facades requiring non-combustible construction
- > Class 4 vapour permeable and can achieve outstanding building airtightness
- > It is the only compliant rigid air barrier in Climate Zones 6, 7 & 8
- > Easy to cut and shape, offering more options for design detailing
- > Up to 50% quicker to install than cement based boards or metal sheets
- > Makes the building weathertight for internal trades, reducing the construction cycle
- > Simply score and snap, no need for specialist cutting equipment or segregated areas
- > Helps reduce site noise and dust emissions
- > No additional wall wrap or sarking may be needed
- > **weather defence™** is water, weather and mould resistant and can be left exposed on frame for up to 12 months. It makes the building weathertight, allowing internal trades to start working earlier.

applications

Siniat **weather defence™** is a rigid air barrier which is used behind facade cladding systems to create a pressure equalised cavity. It has transformed building envelope construction and performance.

- > Full or partial weathertight layer allowing internal works to begin earlier
- > Can be used in high wind zones of the facade
- > Mould resistant and no silica dust risk
- > Vapour permeable class 4, the only compliant rigid air barrier in Climate Zones 6, 7 & 8
- > Complete system components; board, jointing tape & screws
- > Board & joints consistently exceed airtightness values demanded from various performance standards
- > Lightweight board to create corners or curves, offering more options for design detailing
- > Sustainable with lower embodied carbon

An innovative, lightweight technology

External sheathing board options have evolved. **weather defence™** is a rigid air barrier that is BCA compliant for non-combustible facades; a great alternative to cement based sheathing boards.

weather defence™ can easily create corners or striking curves, offering more options for design detailing.

weather defence™ is designed to be installed on:

- > Light steel infill systems on concrete and steel frame buildings
- > Modular buildings
- > Timber frame buildings

weather defence™ installations can achieve airtightness targets that contribute to a building's energy efficiency and allow any glasswool insulation in the cavity to perform as intended by avoiding wind washing.

It has a fully recyclable gypsum core that is low in embodied carbon and that produces no silica dust during installation. **weather defence™** also improves thermal and acoustic performance.



installation benefits

Why **weather defence™** significantly quicker to install than cement based boards or metal sheeting:

- > It can be scored and snapped with a utility knife
- > No transportation time to a separate cutting area
- > It can replace wall wrap
- > Fine details are easily cut using a key hole saw or power tools
- > Can be left exposed on frame for up to twelve months

installation

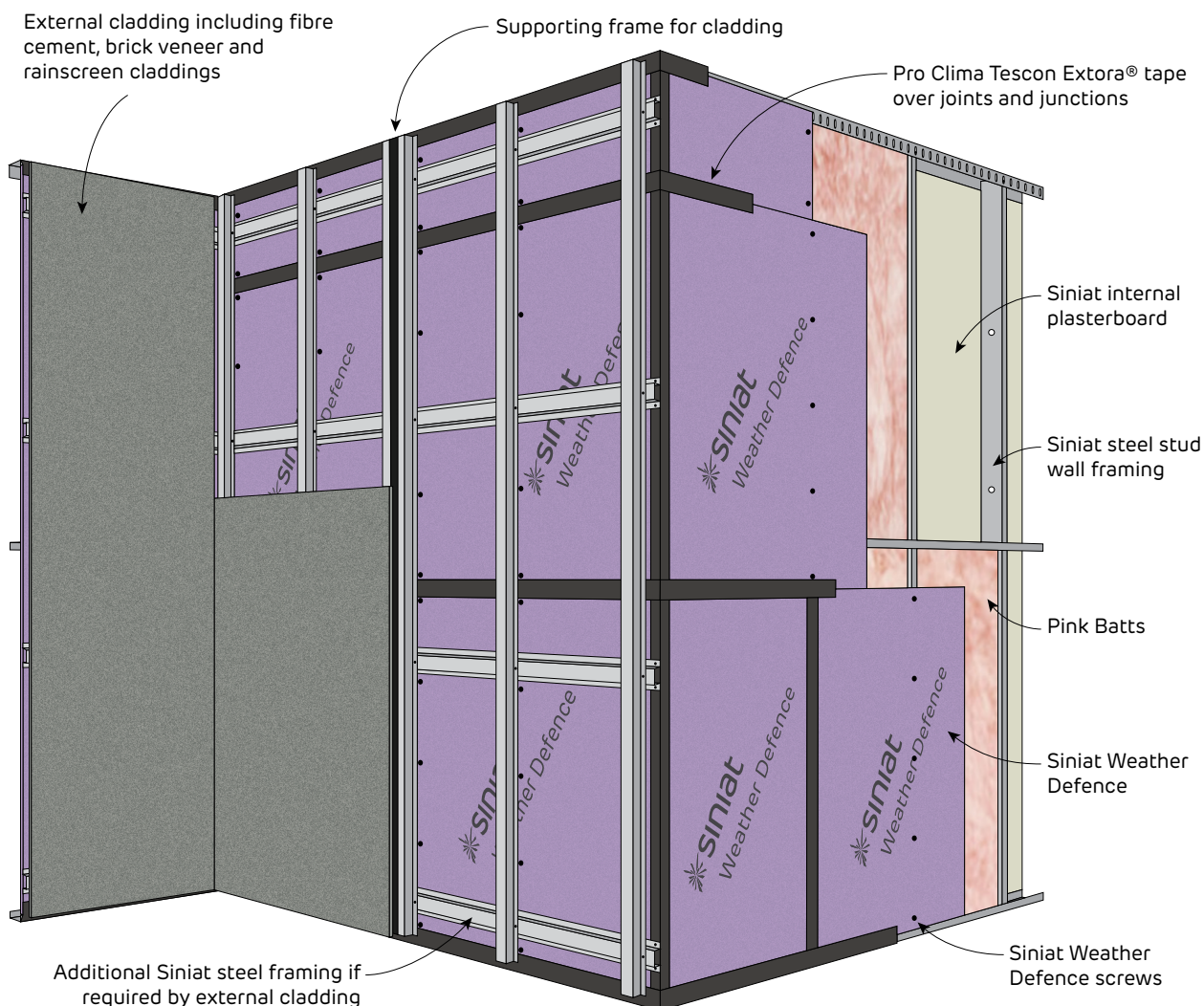
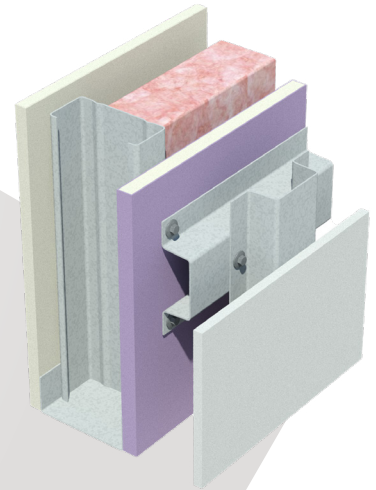


FIGURE 7 Typical Weather Defence Installation
Perspective



weather defence™ components


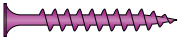


board

	thickness (mm)	width (mm)	length (mm)	weight* (approx. kg/ piece)	material code (SAP)
weather defence™	13	1200	2400	11.7	4082431

Related products (complete solution)

screws

	image	gauge	length (mm)	application	material code (SAP)
Weather Defence Screws 38mm (1000 pcs)		6	38	steel	4084645
Weather Defence Screws 42mm (1000 pcs)		6	42	timber	4084646

joint sealing tapes

		width (mm)	length (m)	application	Pro Clima material code (SAP)
Pro Clima Tape Tescon Extora® Flashing Tape - (Supplied by Pro Clima)		60	30	Jointing	13206
		100	30	Vertical control joints internal and external corners	13280
		150	30	92mm stud frame openings	14891
Pro Clima Tape Tescon Extoseal® Sill Tape - (Supplied by Pro Clima)		150	20	92mm stud frame openings	14152
		200	20	150mm stud frame openings	14156
Pro Clima Tape Tescon® WS Wet Seal Connection Tape - (Supplied by Pro Clima)		38	30	window sill for sealant	16849



key selling propositions

Top four benefits to the Weather Defence System

- Create rigid weathertight/airtight barrier;
- Can be exposed to weather up to 12 months;
- Classified as non-hazardous silica risk;
- The only compliant rigid air barrier in Climate Zones 6, 7 & 8.

competitive advantages

- > A faster way to a weathertight building
- > 12 months warranty on weather resistance during construction phase
- > Non-hazardous, low silica
- > No special tools for cutting, no segregated work area required for cutting
- > 50% quicker to install than cement based boards or metal sheets and low in embodied carbon
- > Vapour permeable class 4, the only compliant rigid air barrier in Climate Zones 6, 7 & 8
- > Compliant for facades requiring non-combustible construction
- > Added mass to improve acoustics/sound insulation
- > High-wind zone facades

frequently asked questions (FAQ's)

Where do I get the Pro Clima tapes?

The Pro Clima website has a 'Where to Buy' section; <https://proclima.com.au/partners/>

Is the system guaranteed for 6 months or 12 months?

The warranty for weather exposure is 12 months for **weather defence™** and 6 months for Pro Clima tapes.

Do I need control joints?

No control joints unless there is a change in substrate or a control joint in the substrate.

Can I install the sheets vertically?

Vertical installation is not recommended. If necessary, contact Siniat Technical Services for specific frame and screw spacing requirements.

How do I achieve airtightness?

While **weather defence™** is a great air barrier, good airtightness is very dependent on detailing such as application of sealants between frame and **weather defence™** at wall perimeters.

Do I need to back the joints with framing?

All vertical joints must be backed by framing, refer to the Installation diagram. Horizontal joints do not need to be backed with framing.

Is there a sealant that I can use instead of Pro Clima tapes?

Pro Clima tapes are the only option that have been tested for weather tightness.



marketing support material

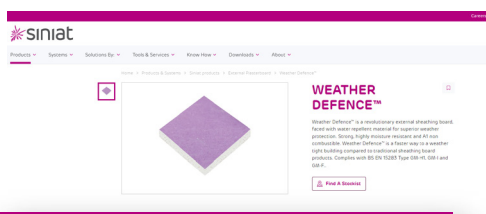


- [Training video and presentation](#)
Available now

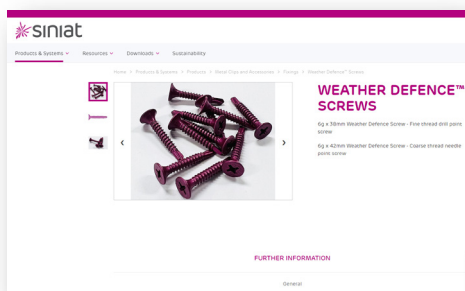


- [Weather Defence brochure](#)
Available now

- [Weather Defence product data sheet](#)
Available now



- [Weather Defence webpage](#)
Available now



- [Weather Defence screws webpage](#)
Available now



Etex Australia Pty Ltd

ABN 61 003 621 010
31 Military Road, Matraville
NSW 2036

siniat.com.au



warranty

Siniat's products are guaranteed
by a 10 Year Warranty.
For details visit siniat.com.au/warranty

technical advice
AU 1300 724 505