

**#1: External Wall NCC-C3-NLB-F1R1**  
SSW476.NLB

- ① 9mm ExoTec (Example only, can be any cladding as per project specification)
- ② 40mm Framing Cavity  
Framing: 15mm Horizontal and 25mm Vertical Top Hats at maximum 450mm centres
- ③ HardieWrap Weather Barrier
- ④ 16mm Multishield
- ⑤ 92mm Framing Cavity with 90mm Pink Batts Wall R2.0  
Framing: Single 92mm Siniat Studs at maximum 450mm centres
- ⑥ 16mm Fireshield

Rated from both sides; Non-Load Bearing FRL: -/90/90; Load Bearing FRL: 60/60/60  
Rw: 48; Rw + Ctr: 41  
Insulation Pathway Total R-Value (note 7): 2.53 m2.K/W

**#2: External Wall NCC-C3-NLB-F1R2**  
SSW476.NLB

- ① 9mm ExoTec (Example only, can be any cladding as per project specification)
- ② 40mm Framing Cavity  
Framing: 15mm Horizontal and 25mm Vertical Top Hats at maximum 450mm centres
- ③ SilverSark xR Reflective Sarking (or any anti-glare reflective sarking with maximum outward emittance of 0.07)
- ④ 16mm Multishield
- ⑤ 150mm Framing Cavity with 2 x 70mm Pink Soundbreak R2.0  
Framing: Single 150mm Siniat Studs at maximum 450mm centres
- ⑥ 16mm Fireshield

Rated from both sides; Non-Load Bearing FRL: -/90/90; Load Bearing FRL: 60/60/60  
Rw: 49; Rw + Ctr: 44  
Insulation Pathway Total R-Value (note 7): 4.53 m2.K/W

**#3: External Wall NCC-C3-NLB-F1R3**  
ILLUSTRATION ONLY, components shown are just representative, NOT TO SCALE!

- ① 9mm ExoTec (Example only, can be any cladding as per project specification)
- ② 40mm Framing Cavity  
Framing: 15mm Horizontal and 25mm Vertical Top Hats at maximum 450mm centres
- ③ SilverSark xR Reflective Sarking (or any anti-glare reflective sarking with maximum outward emittance of 0.07)
- ④ 16mm Multishield
- ⑤ 194mm Framing Cavity with 2 x 90mm Pink Batts Wall R2.5 HD  
Framing: Double 92mm Siniat Studs at maximum 450mm centres
- ⑥ 16mm Fireshield

Rated from both sides; FRL1: -/90/90; FRL2: 60/60/60  
Rw: 61; Rw + Ctr: 51  
Insulation Pathway Total R-Value (note 7): 5.53 m2.K/W

**#4: External Wall NCC-C3-NLB-F2R1**  
SSW496

- ① 9mm ExoTec (Example only, can be any cladding as per project specification)
- ② 40mm Framing Cavity  
Framing: 15mm Horizontal and 25mm Vertical Top Hats at maximum 450mm centres
- ③ HardieWrap Weather Barrier
- ④ 13mm Multishield
- ⑤ 92mm Framing Cavity with 90mm Pink Batts Wall R2.0  
Framing: Single 92mm Siniat Studs at maximum 450mm centres
- ⑥ 13mm Fireshield

Rated from both sides; FRL from both sides: -/60/60  
Rw: 46; Rw + Ctr: 39  
Insulation Pathway Total R-Value (note 7): 2.49 m2.K/W

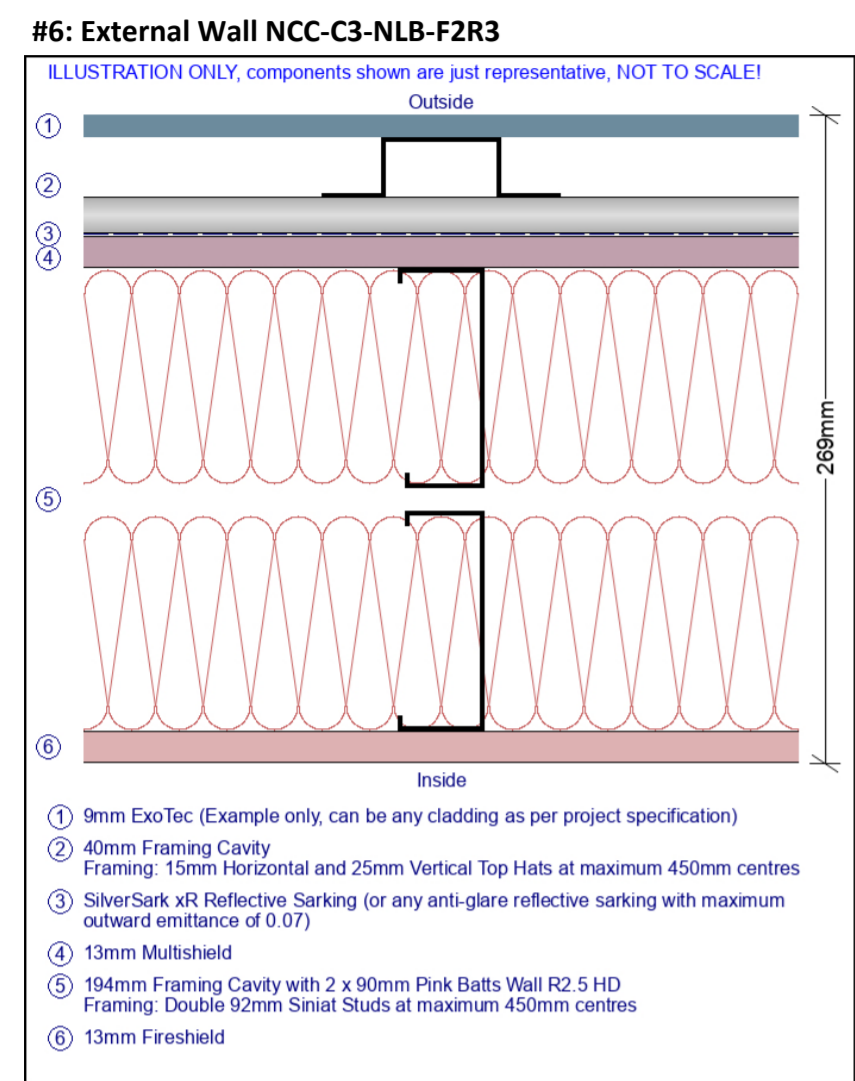
**#5: External Wall NCC-C3-NLB-F2R2**  
SSW496

- ① 9mm ExoTec (Example only, can be any cladding as per project specification)
- ② 40mm Framing Cavity  
Framing: 15mm Horizontal and 25mm Vertical Top Hats at maximum 450mm centres
- ③ SilverSark xR Reflective Sarking (or any anti-glare reflective sarking with maximum outward emittance of 0.07)
- ④ 13mm Multishield
- ⑤ 150mm Framing Cavity with 2 x 70mm Pink Soundbreak R2.0  
Framing: Single 150mm Siniat Studs at maximum 450mm centres
- ⑥ 13mm Fireshield

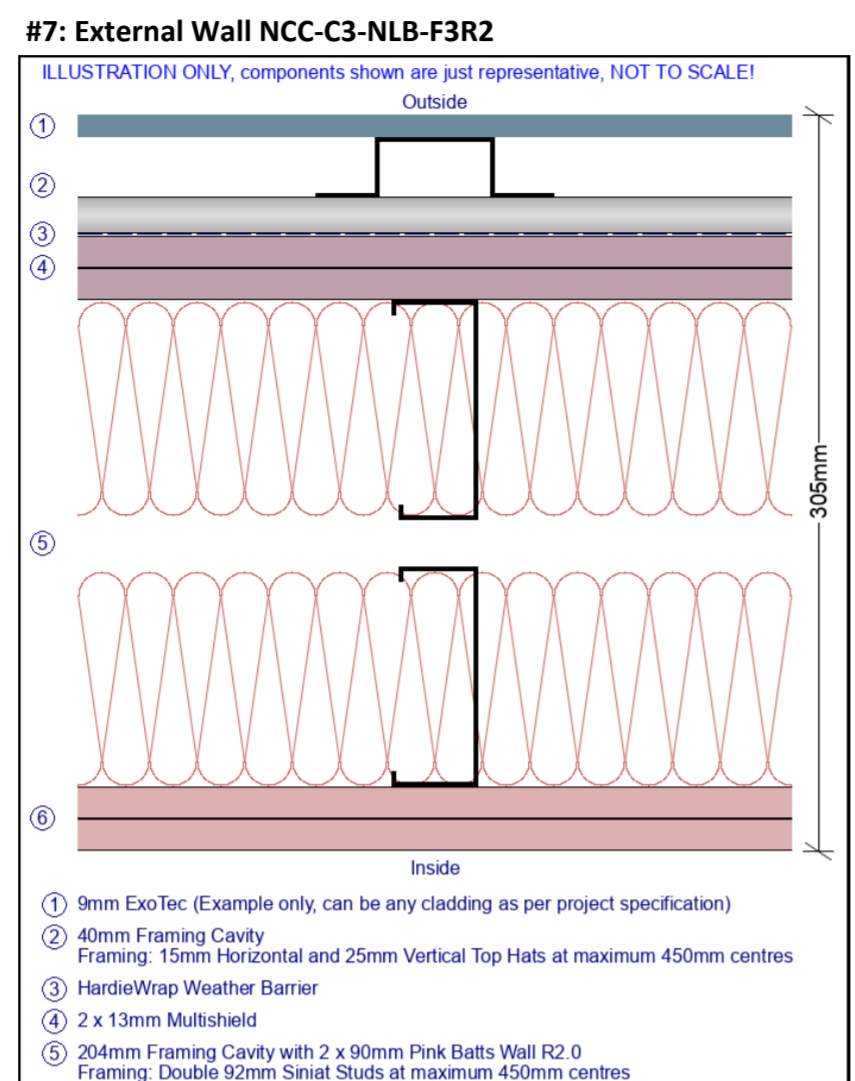
Rated from both sides; Non-Load Bearing FRL: -/60/60; Load Bearing FRL: 30/30/30  
Rw: 48; Rw + Ctr: 42  
Insulation Pathway Total R-Value (note 7): 4.49 m2.K/W

Partition and Ceiling Information		Issue No.	4
		Page No.	1/7
Updated by	Siniat Technical Services	22/09/2021	1. Siniat SELECT Project is a proposal only and is subject to the project/builder's approval as many aspects of construction are not comprehensively covered. 2. It is the responsibility of project certifier to determine if the specified products and performance properties including FRL, RISF, Rw, Rw + Ctr, Lnw and Total R-Value, etc. ratings are suitable for the intended applications. 3. For dimensions and performance properties of systems in this document that use products not manufactured or supplied by Etex Australia and branded Siniat, refer to the relevant product manufacturer. 4. In wet areas, replace Mastashield with Watershield, Soundshield with Trurock, and Fireshield with Trurock or Multishield of same thickness, and replace 10mm Opal with 13mm Watershield. 5. For enhanced impact resistance, replace any plasterboard with Trurock of same thickness. 6. For framing design of internal steel walls and ceilings, refer to the framing tables in the Siniat Blueprint. For framing design of external steel walls and ceilings, please contact Siniat Engineering Services. 7. The Insulation Pathway Total R-Value of a system provided in this document is a sum of the thermal resistances (R-Values) of the individual component layers in a composite element including any building material, insulating material, airspace and associated surface resistances. It is an estimate only, calculated along the insulation pathway without taking into account the thermal bridging effects of framing components and may not comply to the Section J of Building Code of Australia, NCC 2019 Volume One. It is also only valid for summer heat flow (mean temperature of 23°C).
Reviewed by			
Approved by			

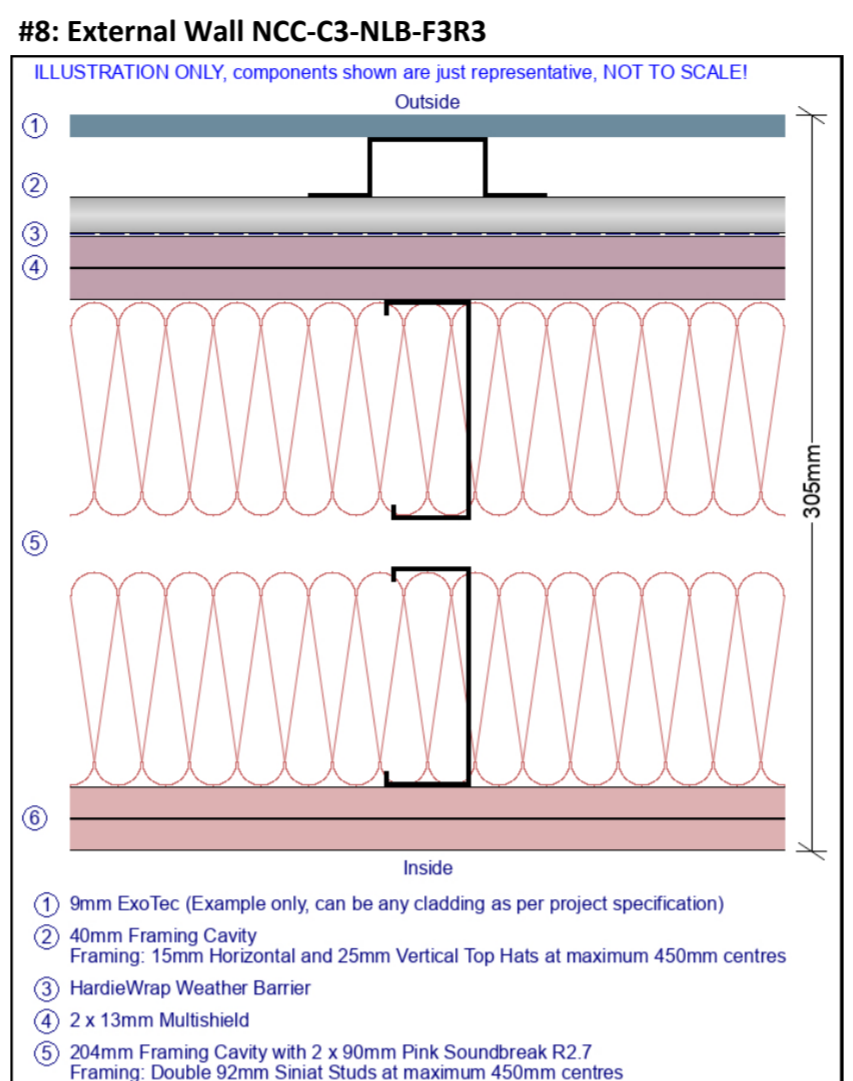
Siniat standard wall and ceiling systems recommended for Class 3 high-rise hotel building made of reinforced concrete structure to meet the deemed-to-satisfy provisions of the NCC.



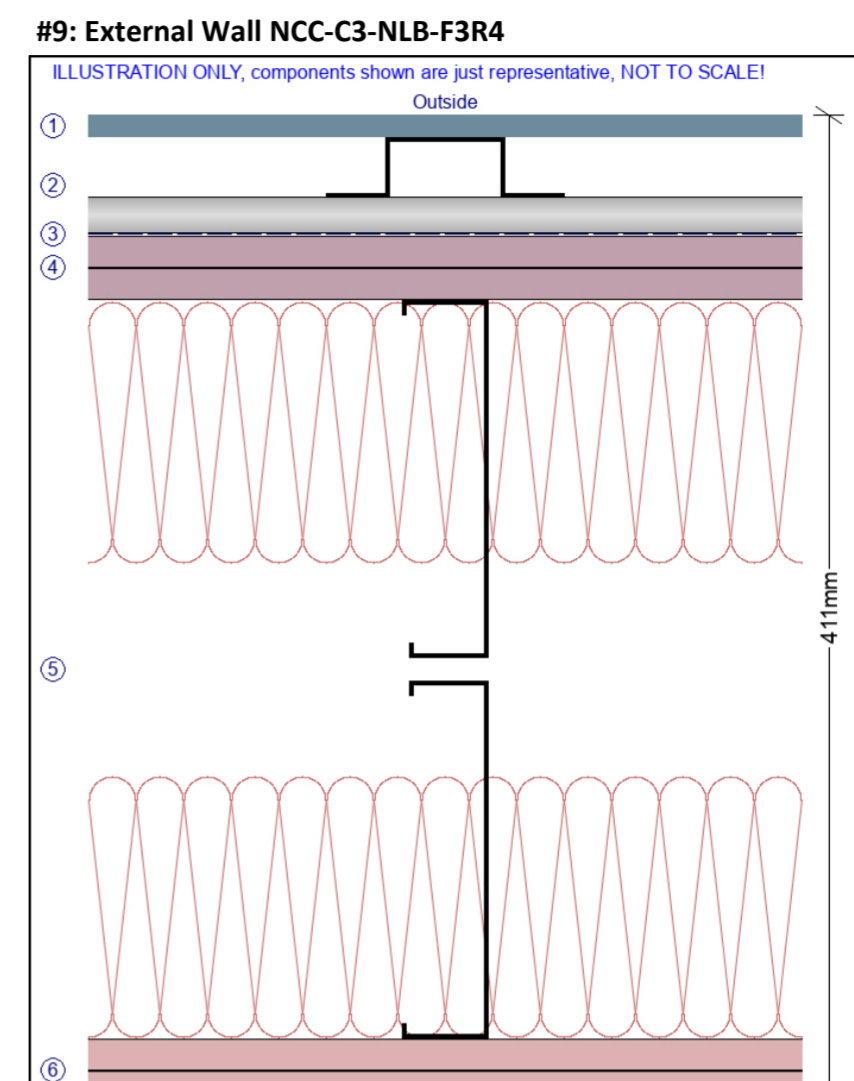
Rated from both sides; FRL1: -/60/60; FRL2: 30/30/30  
 Rw: 59; Rw + Ctr: 49  
 Insulation Pathway Total R-Value (note 7): 5.49 m2.K/W



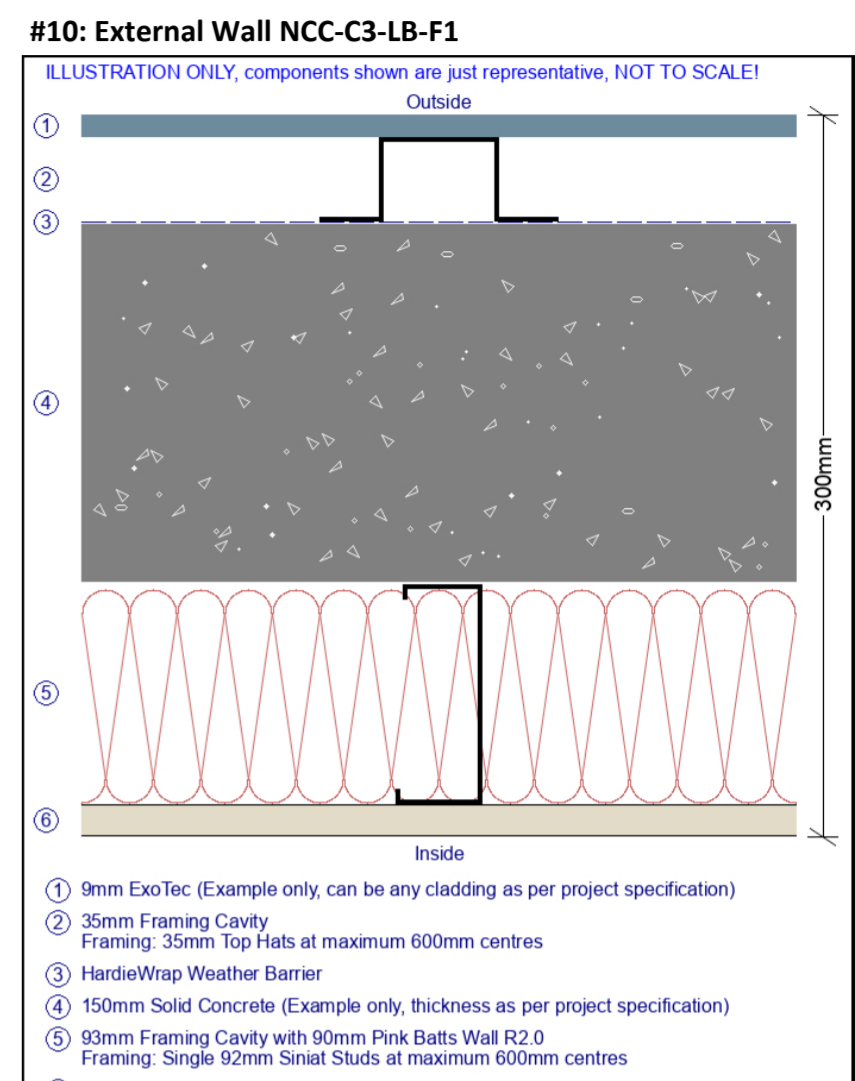
Rated from both sides; FRL1: -/120/120; FRL2: 90/90/90  
 Rw: 69; Rw + Ctr: 57; Discontinuous Construction  
 Insulation Pathway Total R-Value (note 7): 4.64 m2.K/W



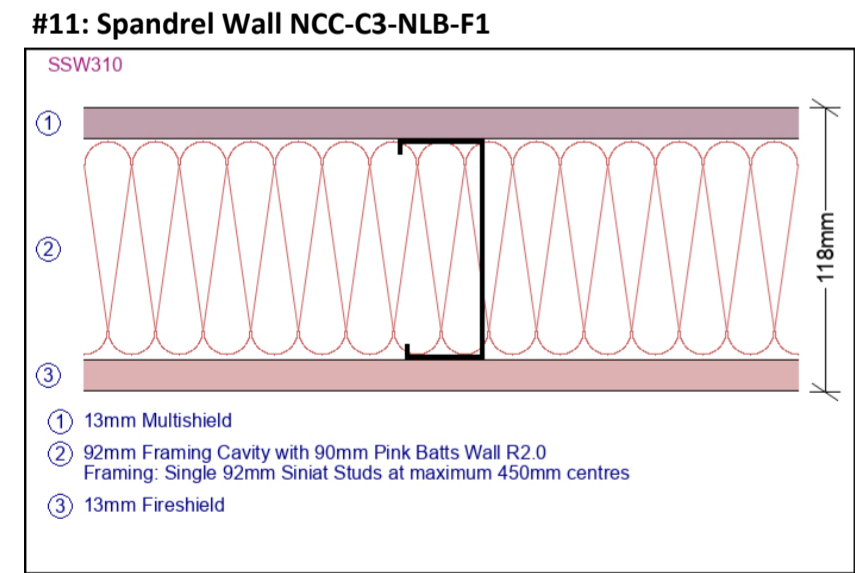
Rated from both sides; FRL1: -/120/120; FRL2: 90/90/90  
 Rw: 69; Rw + Ctr: 57; Discontinuous Construction  
 Insulation Pathway Total R-Value (note 7): 6.04 m2.K/W



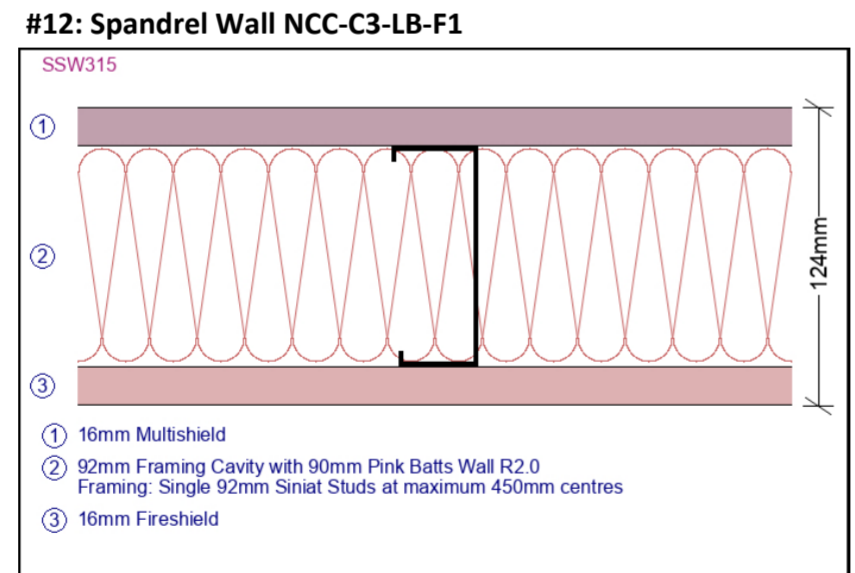
Rated from both sides; FRL1: -/120/120; FRL2: 90/90/90  
 Rw: 72; Rw + Ctr: 61  
 Insulation Pathway Total R-Value (note 7): 6.84 m2.K/W



Rated from both sides; FRL: Masonry FRL  
 Rw: 64; Rw + Ctr: 53  
 Insulation Pathway Total R-Value (note 7): 2.52 m2.K/W



Rated from both sides; Non-Load Bearing FRL: -/60/60; Load Bearing FRL: 30/30/30  
 Rw: 41; Rw + Ctr: 32  
 Insulation Pathway Total R-Value (note 7): 2.31 m2.K/W

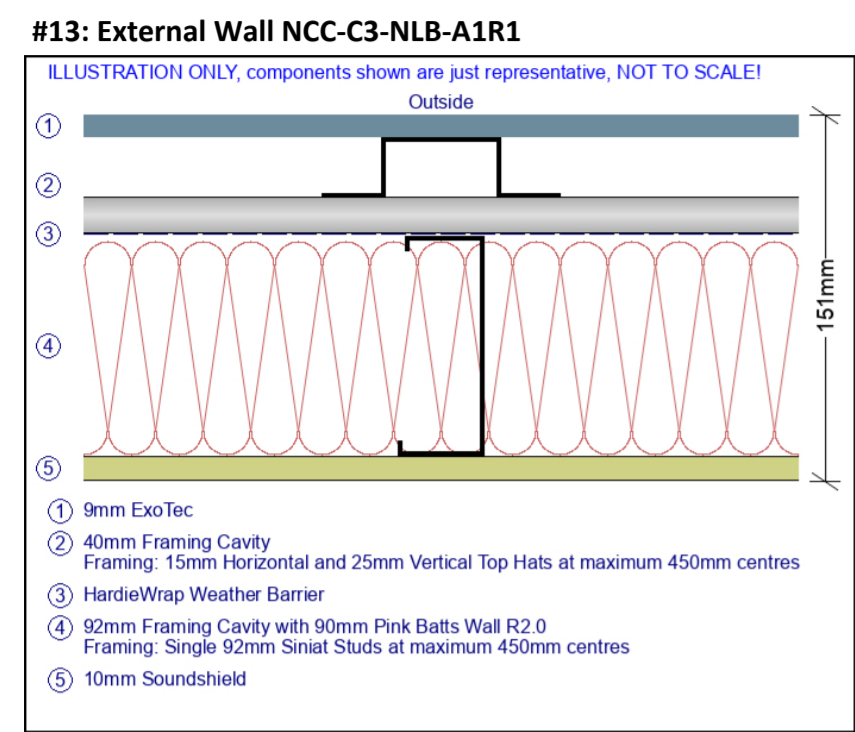


Rated from both sides; Non-Load Bearing FRL: -/90/90; Load Bearing FRL: 60/60/60  
 Rw: 43; Rw + Ctr: 34  
 Insulation Pathway Total R-Value (note 7): 2.35 m2.K/W

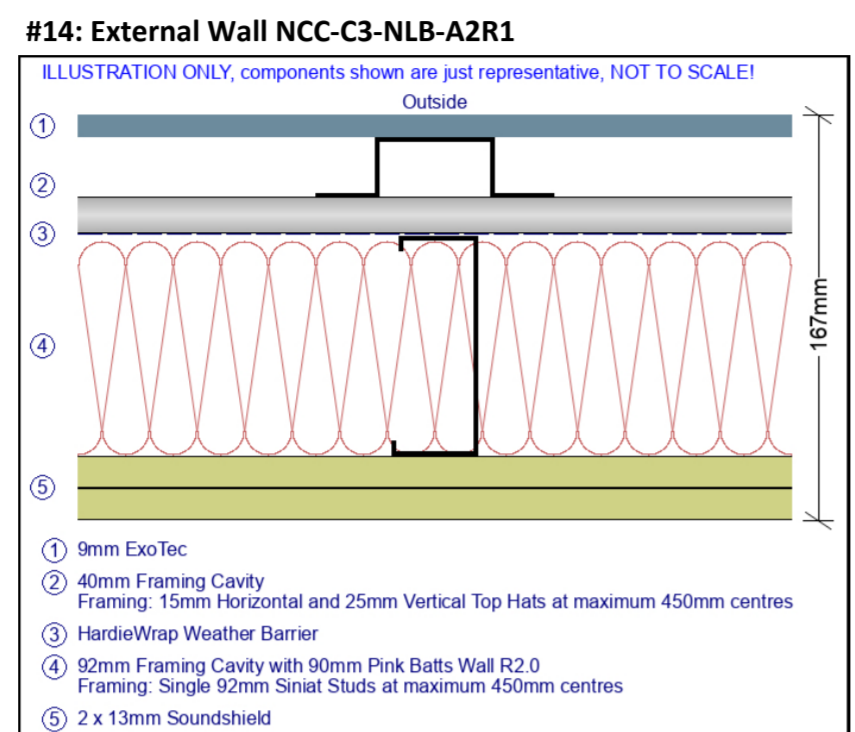
Partition and Ceiling Information		Issue No.	4
		Page No.	2/7
Updated by	Siniat Technical Services	22/09/2021	
Reviewed by			
Approved by			

Siniat standard wall and ceiling systems recommended for Class 3 high-rise hotel building made of reinforced concrete structure to meet the deemed-to-satisfy provisions of the NCC.

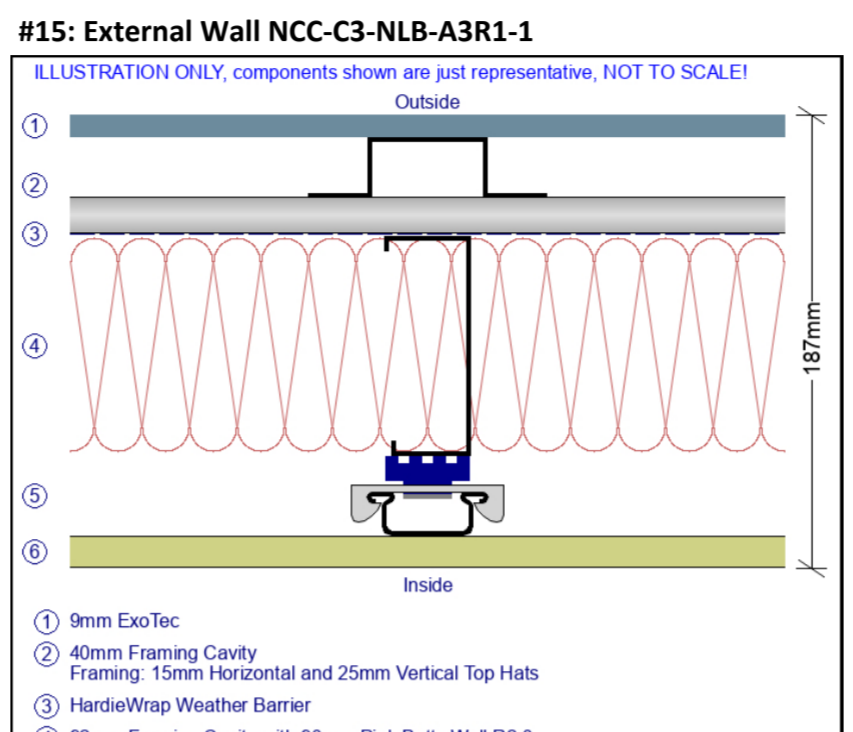
1. Siniat SELECT Project is a proposal only and is subject to the project/builder's approval as many aspects of construction are not comprehensively covered.
2. It is the responsibility of project certifier to determine if the specified products and performance properties including FRL, RISF, Rw, Rw + Ctr, Lnw and Total R-Value, etc. ratings are suitable for the intended applications.
3. For dimensions and performance properties of systems in this document that use products not manufactured or supplied by Etex Australia and branded Siniat, refer to the relevant product manufacturer.
4. In wet areas, replace Mastashield with Watershield, Soundshield with Trurock, and Fireshield with Trurock or Multishield of same thickness, and replace 10mm Opal with 13mm Watershield.
5. For enhanced impact resistance, replace any plasterboard with Trurock of same thickness.
6. For framing design of internal steel walls and ceilings, refer to the framing tables in the Siniat Blueprint. For framing design of external steel walls and ceilings, please contact Siniat Engineering Services.
7. The Insulation Pathway Total R-Value of a system provided in this document is a sum of the thermal resistances (R-Values) of the individual component layers in a composite element including any building material, insulating material, airspace and associated surface resistances. It is an estimate only, calculated along the insulation pathway without taking into account the thermal bridging effects of framing components and may not comply to the Section J of Building Code of Australia, NCC 2019 Volume One. It is also only valid for summer heat flow (mean temperature of 23°C).



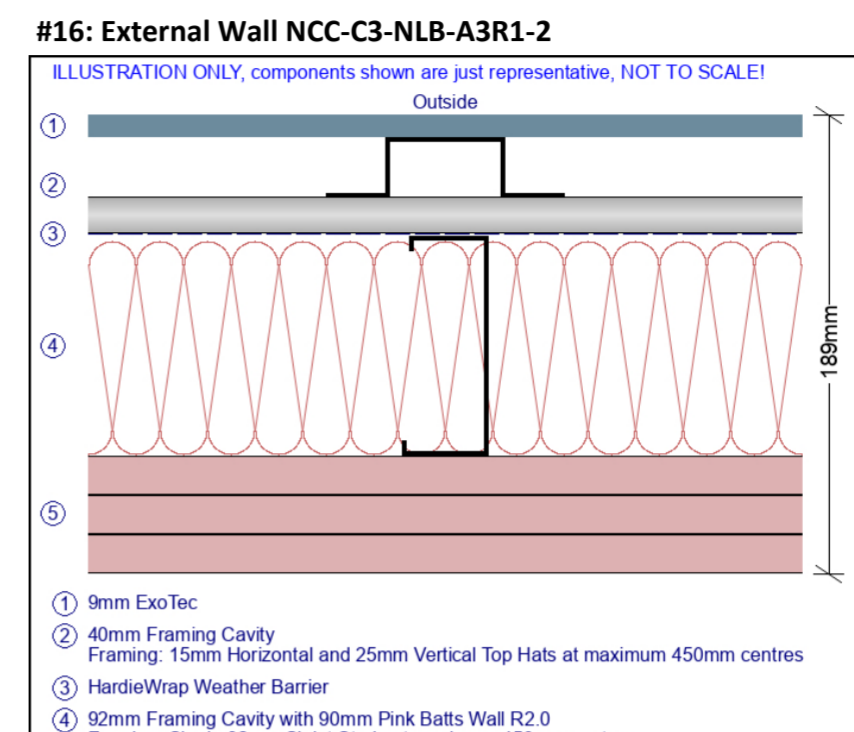
Rw: 44; Rw + Ctr: 35  
Insulation Pathway Total R-Value (note 7): 2.4 m2.K/W



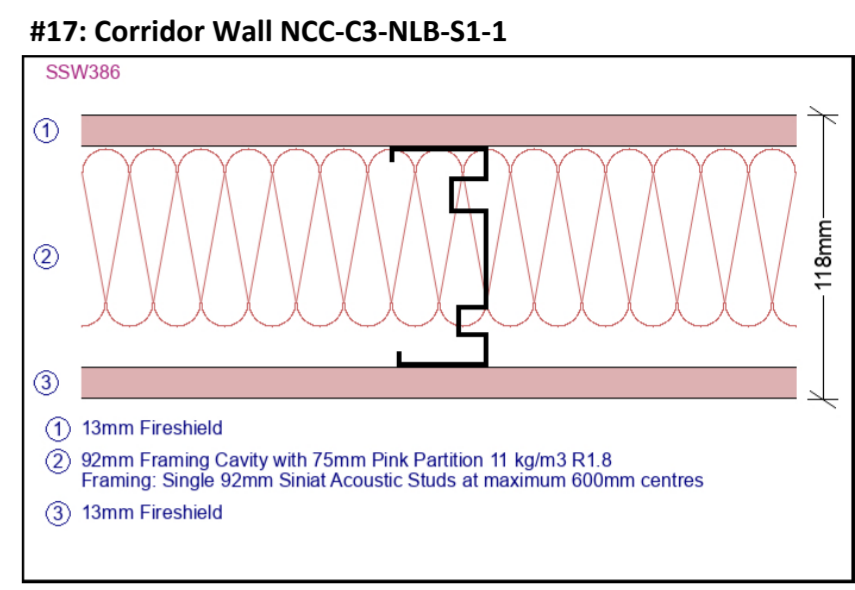
Rw: 49; Rw + Ctr: 42  
Insulation Pathway Total R-Value (note 7): 2.49 m2.K/W



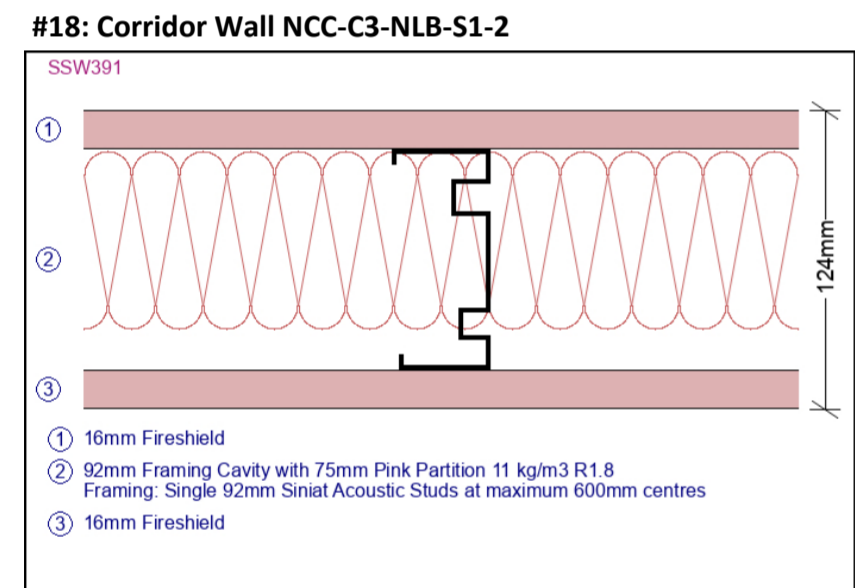
Rw: 55; Rw + Ctr: 45; Impact Sound Resistant  
Insulation Pathway Total R-Value (note 7): 2.41 m2.K/W



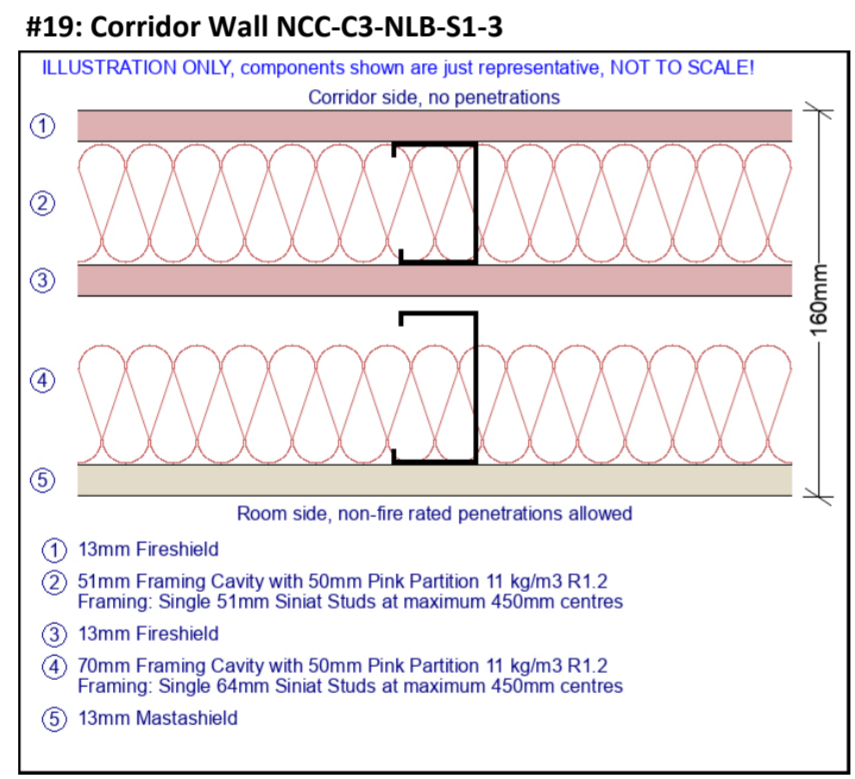
Rw: 52; Rw + Ctr: 45  
Insulation Pathway Total R-Value (note 7): 2.62 m2.K/W



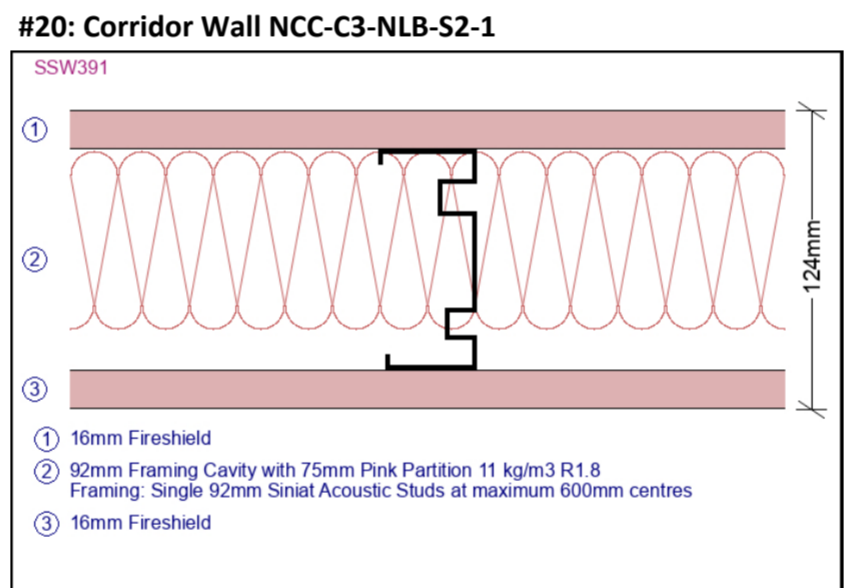
Rated from both sides; FRL1: -/60/60; FRL2: 30/30/30  
Rw: 50; Rw + Ctr: 41  
Insulation Pathway Total R-Value (note 7): 2.11 m2.K/W



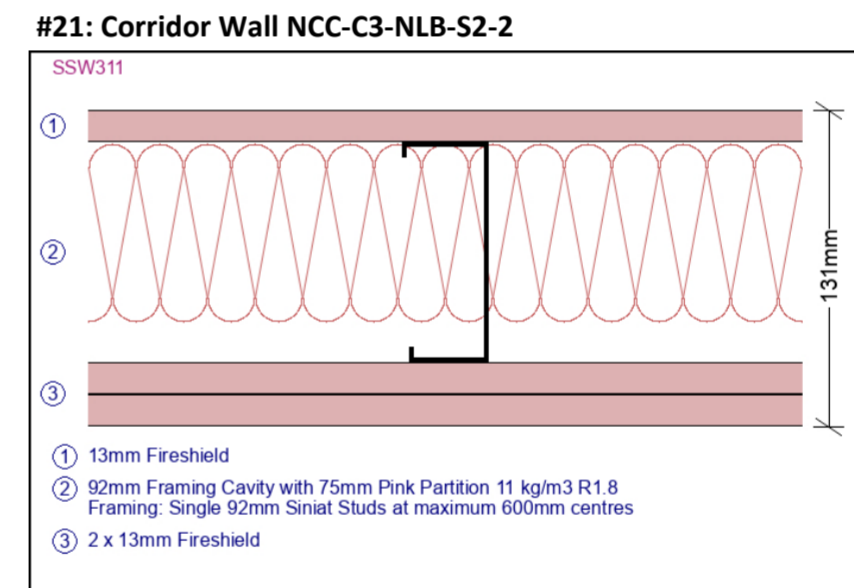
Rated from both sides; FRL1: -/90/90; FRL2: 60/60/60  
Rw: 51; Rw + Ctr: 43  
Insulation Pathway Total R-Value (note 7): 2.15 m2.K/W



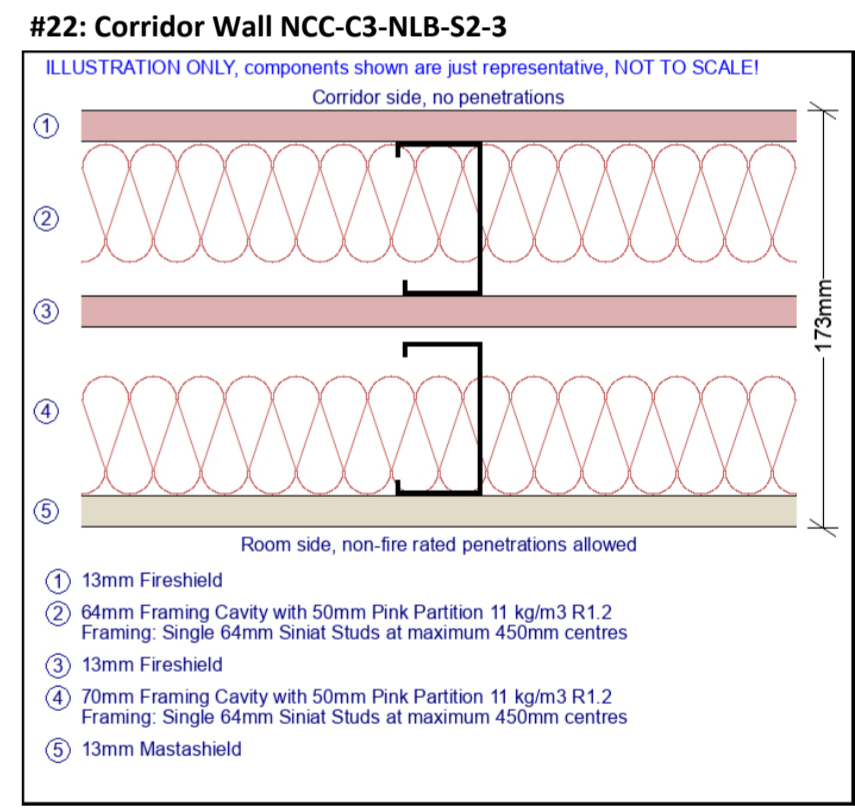
Rated from both sides; FRL1: -/60/60; FRL2: 30/30/30  
Rw: 51; Rw + Ctr: 37  
Insulation Pathway Total R-Value (note 7): 2.79 m2.K/W



Rated from both sides; FRL1: -/90/90; FRL2: 60/60/60  
Rw: 51; Rw + Ctr: 43  
Insulation Pathway Total R-Value (note 7): 2.15 m2.K/W



Rated from both sides; FRL1: -/90/90; FRL2: 30/30/30  
Rw: 50; Rw + Ctr: 43  
Insulation Pathway Total R-Value (note 7): 2.19 m2.K/W

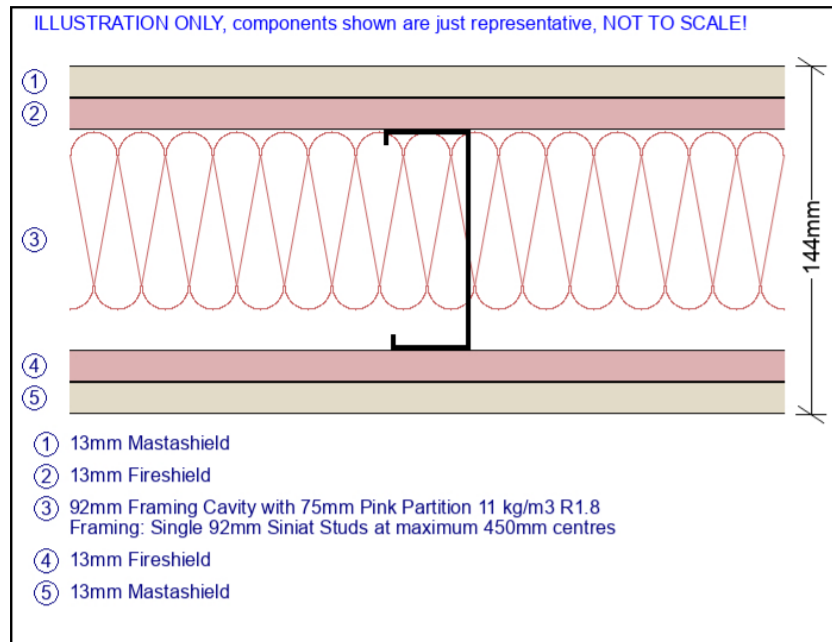


Rated from both sides; FRL1: -/60/60; FRL2: 30/30/30  
Rw: 52; Rw + Ctr: 38  
Insulation Pathway Total R-Value (note 7): 2.79 m2.K/W

Partition and Ceiling Information		Issue No.	4
		Page No.	3/7
Updated by	Siniat Technical Services	22/09/2021	
Reviewed by			
Approved by			
Siniat standard wall and ceiling systems recommended for Class 3 high-rise hotel building made of reinforced concrete structure to meet the deemed-to-satisfy provisions of the NCC.			

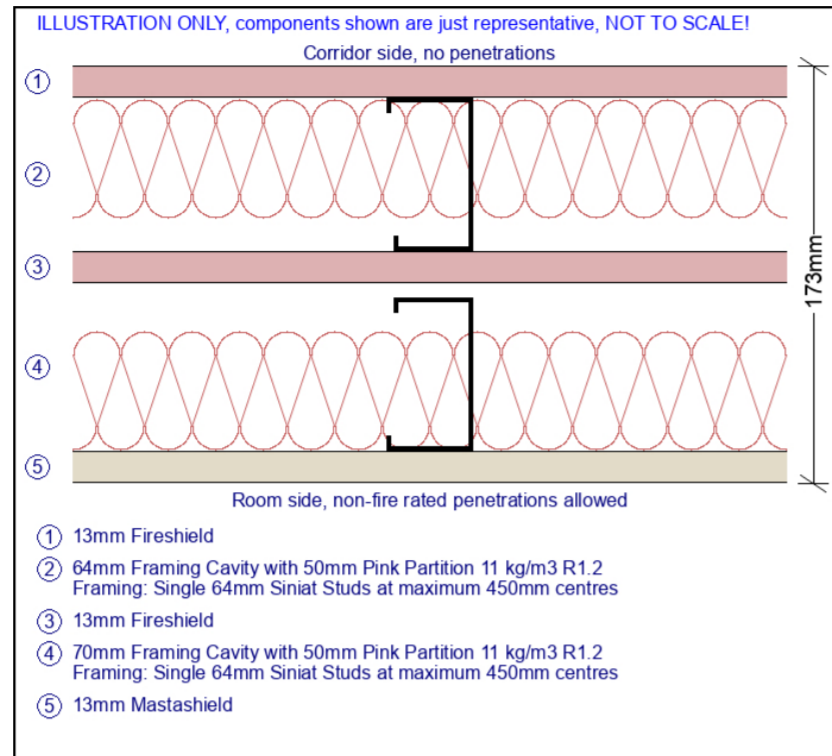
1. Siniat SELECT Project is a proposal only and is subject to the project/builder's approval as many aspects of construction are not comprehensively covered.
2. It is the responsibility of project certifier to determine if the specified products and performance properties including FRL, RISF, Rw, Rw + Ctr, Lnw and Total R-Value, etc. ratings are suitable for the intended applications.
3. For dimensions and performance properties of systems in this document that use products not manufactured or supplied by Etex Australia and branded Siniat, refer to the relevant product manufacturer.
4. In wet areas, replace Mastashield with Watershield, Soundshield with Trurock, and Fireshield with Trurock or Multishield of same thickness, and replace 10mm Opal with 13mm Watershield.
5. For enhanced impact resistance, replace any plasterboard with Trurock of same thickness.
6. For framing design of internal steel walls and ceilings, refer to the framing tables in the Siniat Blueprint. For framing design of external steel walls and ceilings, please contact Siniat Engineering Services.
7. The Insulation Pathway Total R-Value of a system provided in this document is a sum of the thermal resistances (R-Values) of the individual component layers in a composite element including any building material, insulating material, airspace and associated surface resistances. It is an estimate only, calculated along the insulation pathway without taking into account the thermal bridging effects of framing components and may not comply to the Section J of Building Code of Australia, NCC 2019 Volume One. It is also only valid for summer heat flow (mean temperature of 23°C).

**#23: Corridor Wall NCC-C3-NLB-S3-1**



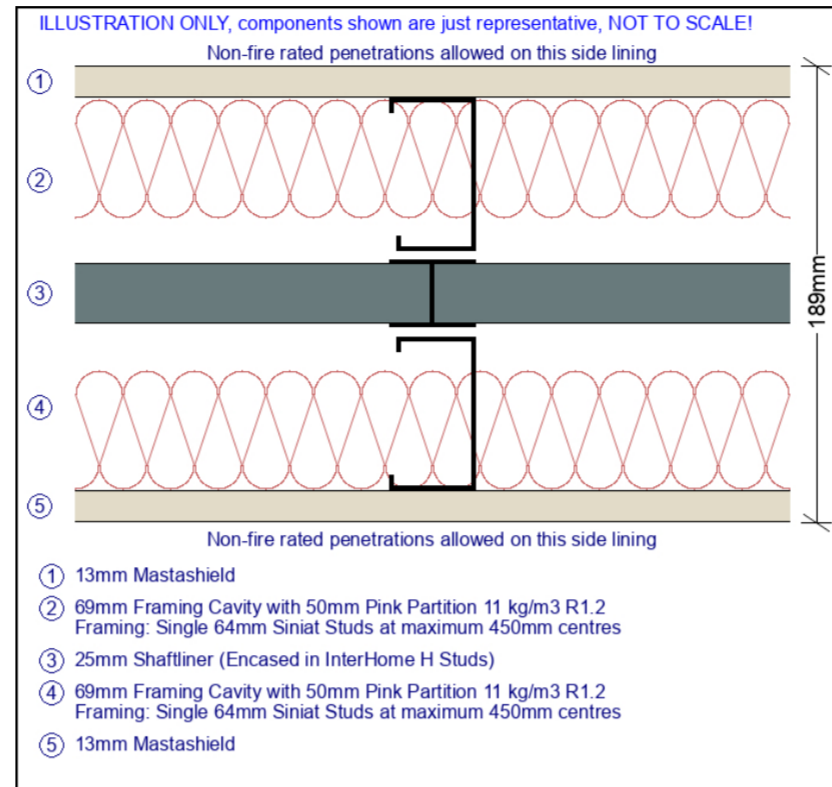
Rated from both sides; FRL1: -/60/60; FRL2: 30/30/30  
 Rw: 51; Rw + Ctr: 43  
 Insulation Pathway Total R-Value (note 7): 2.27 m2.K/W

**#24: Corridor Wall NCC-C3-NLB-S3-2**



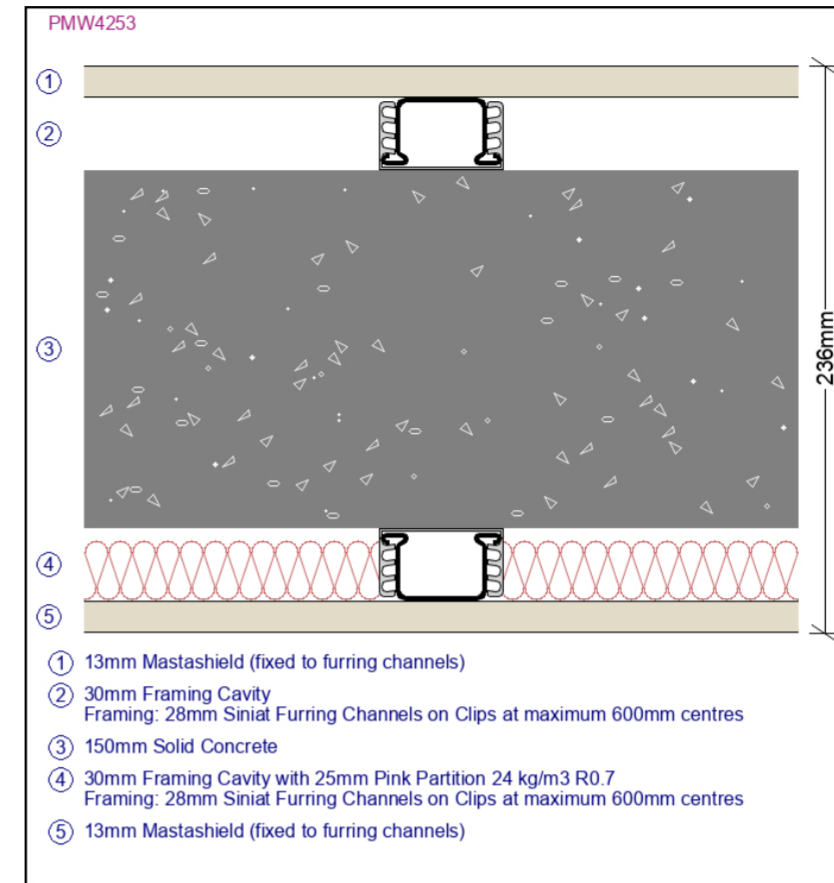
Rated from both sides; FRL1: -/60/60; FRL2: 30/30/30  
 Rw: 52; Rw + Ctr: 38  
 Insulation Pathway Total R-Value (note 7): 2.79 m2.K/W

**#25: Corridor Wall NCC-C3-NLB-S3-3**



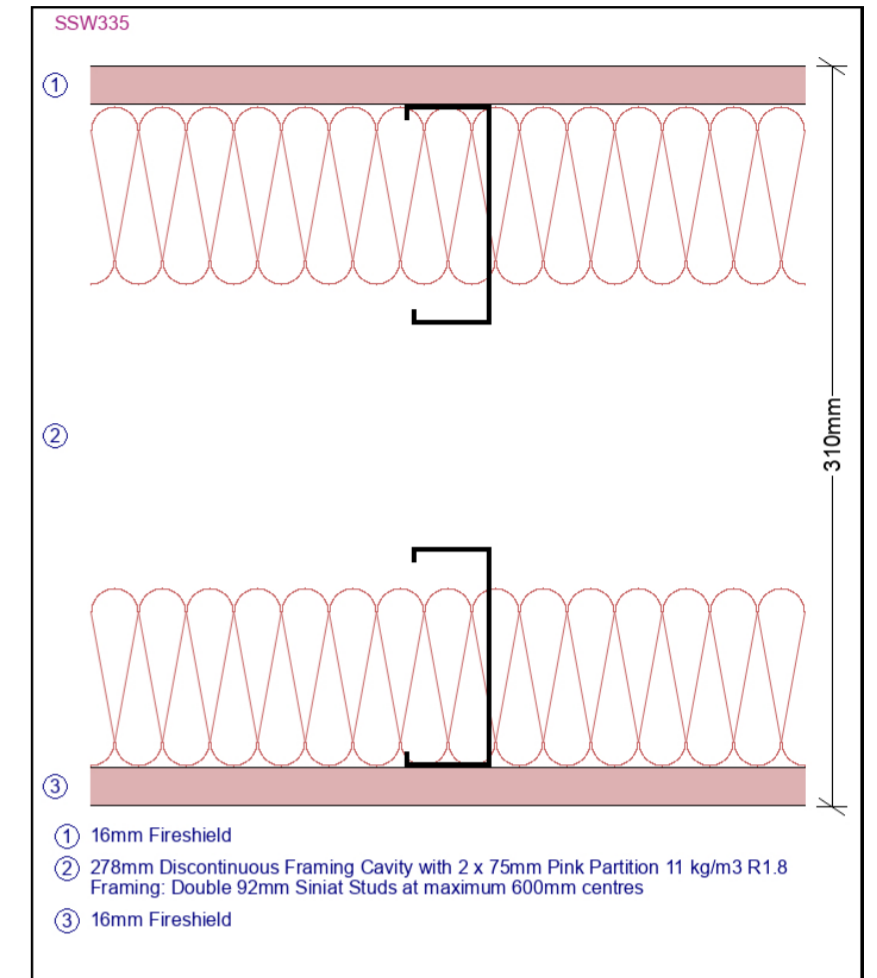
Rated from both sides; FRL1: -/60/60  
 Rw: 55; Rw + Ctr: 38  
 Insulation Pathway Total R-Value (note 7): 2.86 m2.K/W

**#26: Corridor Wall NCC-C3-LB-M-1**



Rated from both sides; FRL from Both Sides: Masonry FRL  
 Rw: 57; Rw + Ctr: 47  
 Insulation Pathway Total R-Value (note 7): 1.28 m2.K/W

**#27: Separating Wall NCC-C3-NLB-BW**

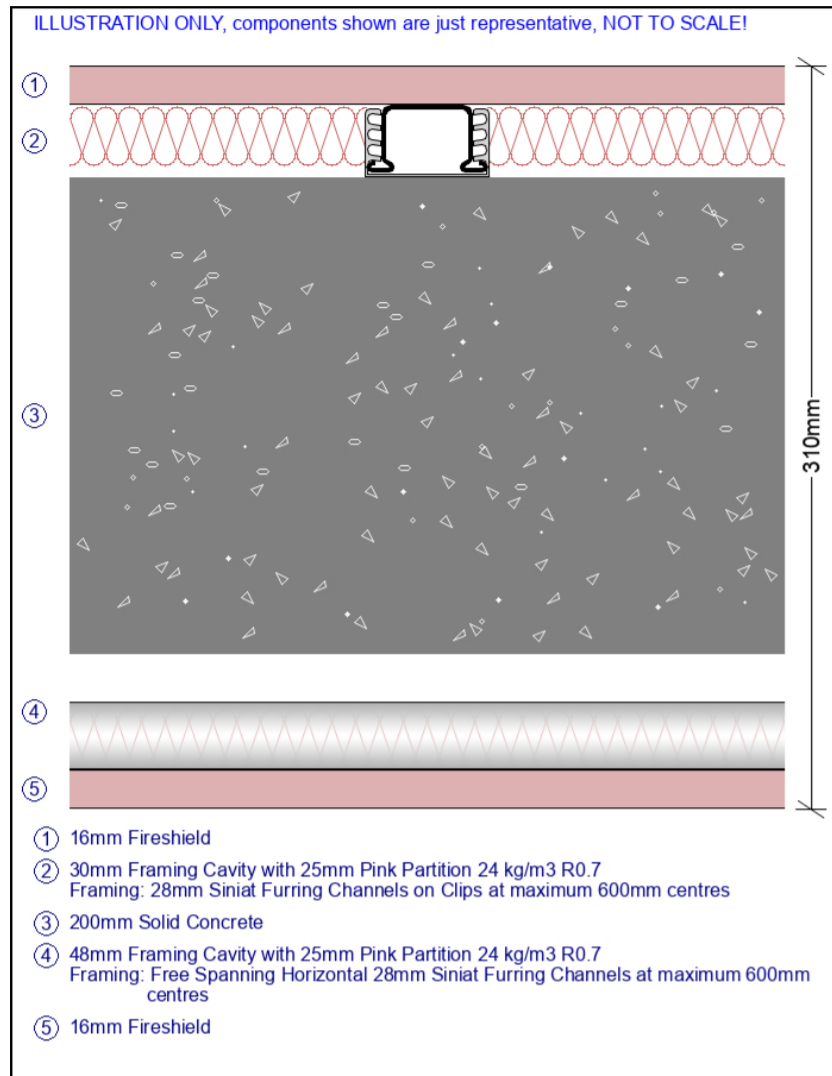


Rated from both sides; Non-Load Bearing FRL: -/90/90; Load Bearing FRL: 60/60/60  
 Rw: 61; Rw + Ctr: 51; Discontinuous Construction  
 Insulation Pathway Total R-Value (note 7): 3.95 m2.K/W

Partition and Ceiling Information		Issue No.	4
		Page No.	4/7
Updated by	Siniat Technical Services	22/09/2021	1. Siniat SELECT Project is a proposal only and is subject to the project/builder's approval as many aspects of construction are not comprehensively covered. 2. It is the responsibility of project certifier to determine if the specified products and performance properties including FRL, RISF, Rw, Rw + Ctr, Lnw and Total R-Value, etc. ratings are suitable for the intended applications. 3. For dimensions and performance properties of systems in this document that use products not manufactured or supplied by Etex Australia and branded Siniat, refer to the relevant product manufacturer. 4. In wet areas, replace Mastashield with Watershield, Soundshield with Trurock, and Fireshield with Trurock or Multishield of same thickness, and replace 10mm Opal with 13mm Watershield. 5. For enhanced impact resistance, replace any plasterboard with Trurock of same thickness. 6. For framing design of internal steel walls and ceilings, refer to the framing tables in the Siniat Blueprint. For framing design of external steel walls and ceilings, please contact Siniat Engineering Services. 7. The Insulation Pathway Total R-Value of a system provided in this document is a sum of the thermal resistances (R-Values) of the individual component layers in a composite element including any building material, insulating material, airspace and associated surface resistances. It is an estimate only, calculated along the insulation pathway without taking into account the thermal bridging effects of framing components and may not comply to the Section J of Building Code of Australia, NCC 2019 Volume One. It is also only valid for summer heat flow (mean temperature of 23°C).
Reviewed by			
Approved by			

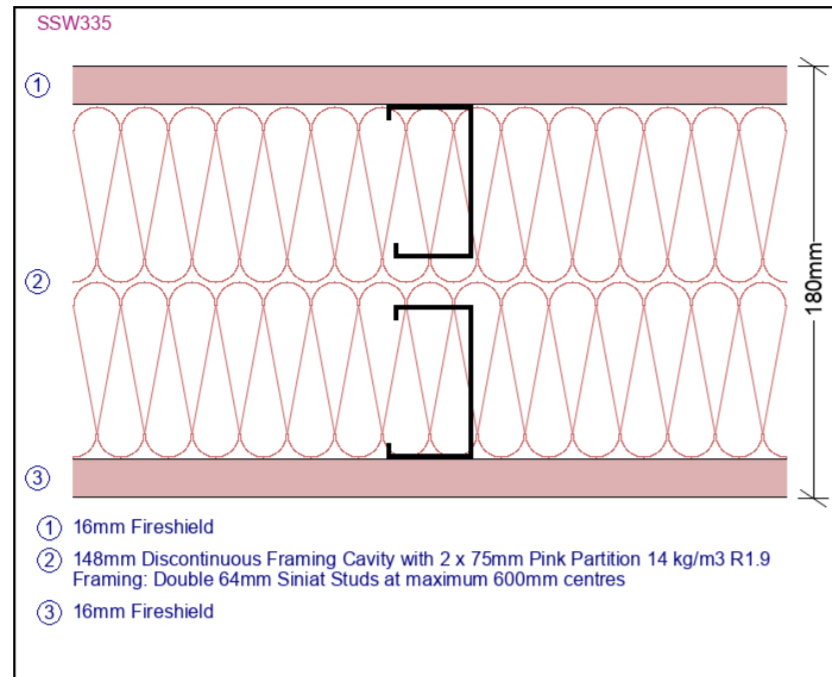
Siniat standard wall and ceiling systems recommended for Class 3 high-rise hotel building made of reinforced concrete structure to meet the deemed-to-satisfy provisions of the NCC.

#28: Separating Wall NCC-C3-LB-BW



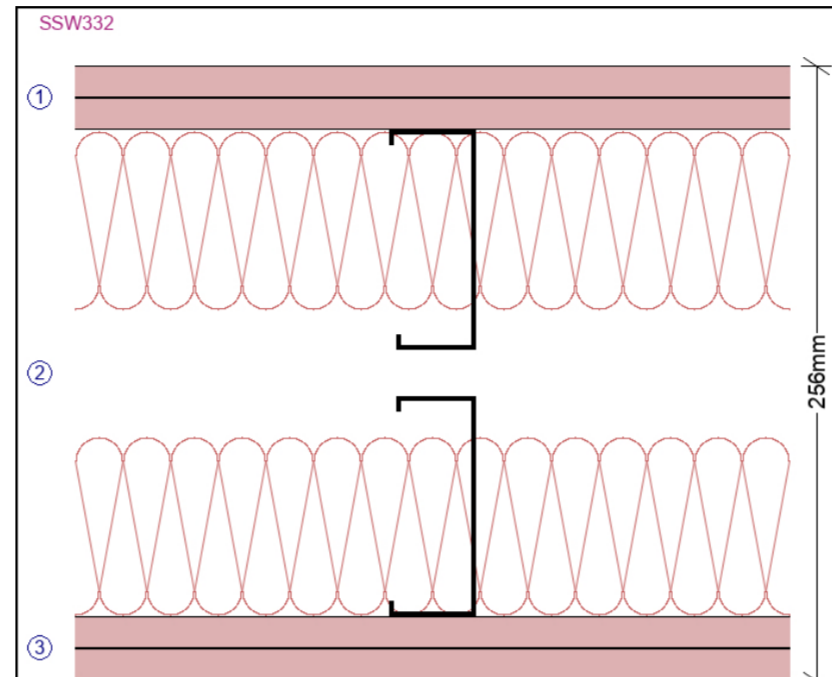
Rw: 60; Rw + Ctr: 52; Discontinuous Construction  
Insulation Pathway Total R-Value (note 7): 1.89 m2.K/W

#29: Separating Wall NCC-C3-NLB-1



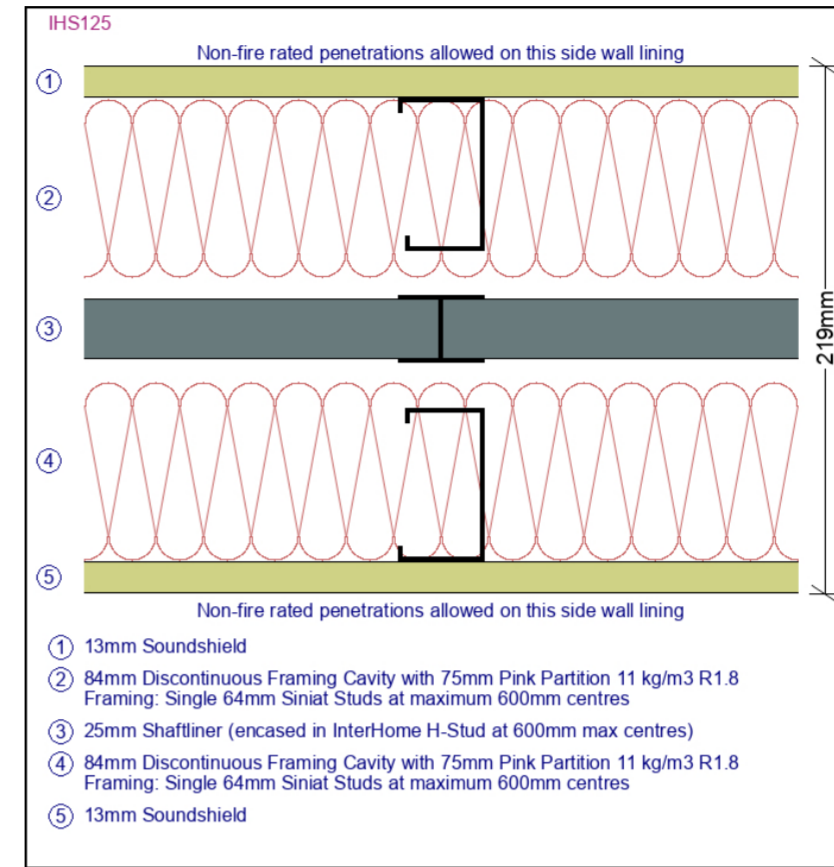
Rated from both sides; Non-Load Bearing FRL: -/90/90; Load Bearing FRL: 60/60/60  
Rw: 60; Rw + Ctr: 50; Discontinuous Construction  
Insulation Pathway Total R-Value (note 7): 4.13 m2.K/W

#30: Separating Wall NCC-C3-NLB-2



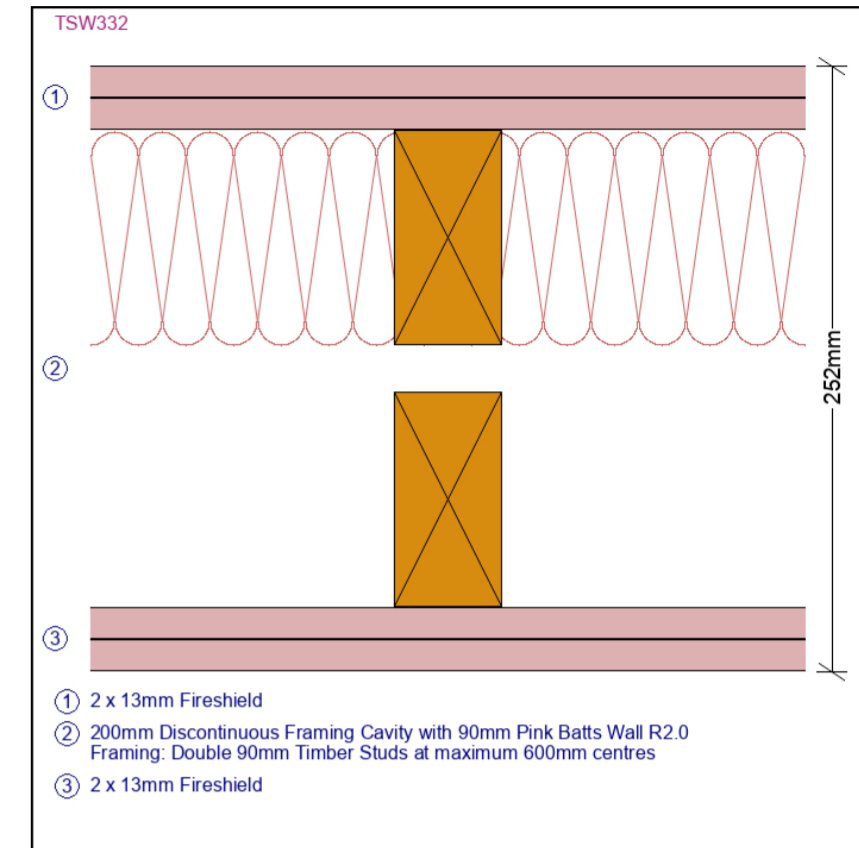
Rated from both sides; Non-Load Bearing FRL: -/120/120; Load Bearing FRL: 90/90/90  
Rw: 64; Rw + Ctr: 55; Discontinuous Construction  
Insulation Pathway Total R-Value (note 7): 4.07 m2.K/W

#31: Separating Wall NCC-C3-NLB-3



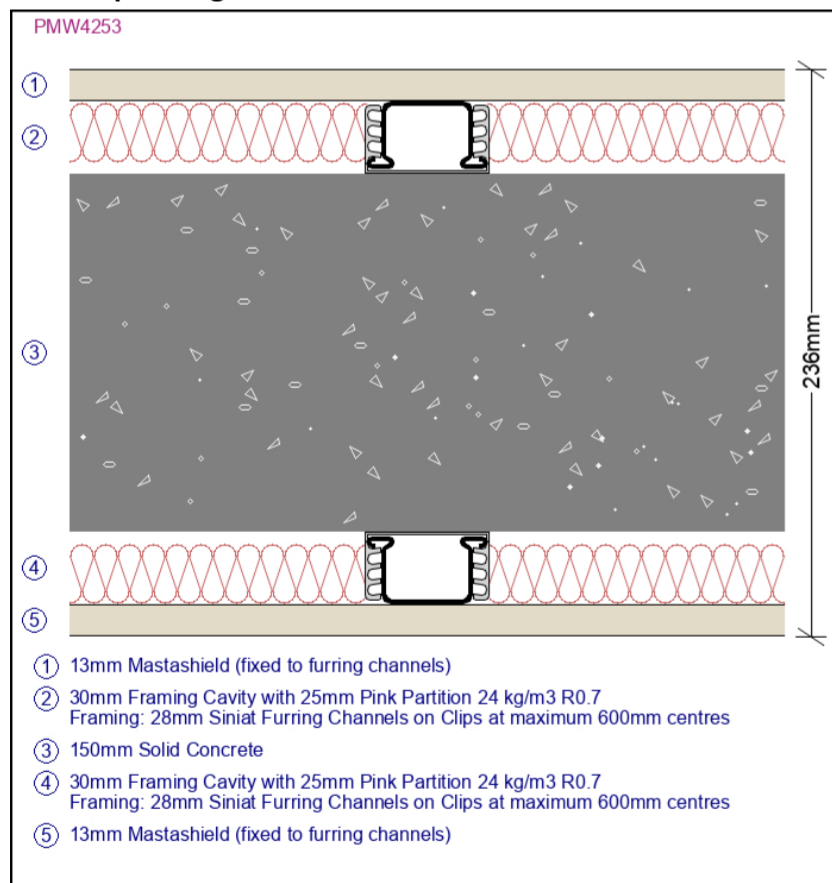
Rated from both sides; Non-Load Bearing FRL: -/60/60  
Rw: 66; Rw + Ctr: 53; Discontinuous Construction  
Insulation Pathway Total R-Value (note 7): 4.06 m2.K/W

#32: Separating Wall NCC-C3-LB-T



Rated from both sides; Non-Load Bearing FRL: -/120/120; Load Bearing FRL: 90/90/90  
Rw: 64; Rw + Ctr: 56; Discontinuous Construction  
Insulation Pathway Total R-Value (note 7): 2.47 m2.K/W

#33: Separating Wall NCC-C3-LB-M



Rated from both sides; FRL from Both Sides: Masonry FRL  
Rw: 61; Rw + Ctr: 50  
Insulation Pathway Total R-Value (note 7): 1.82 m2.K/W

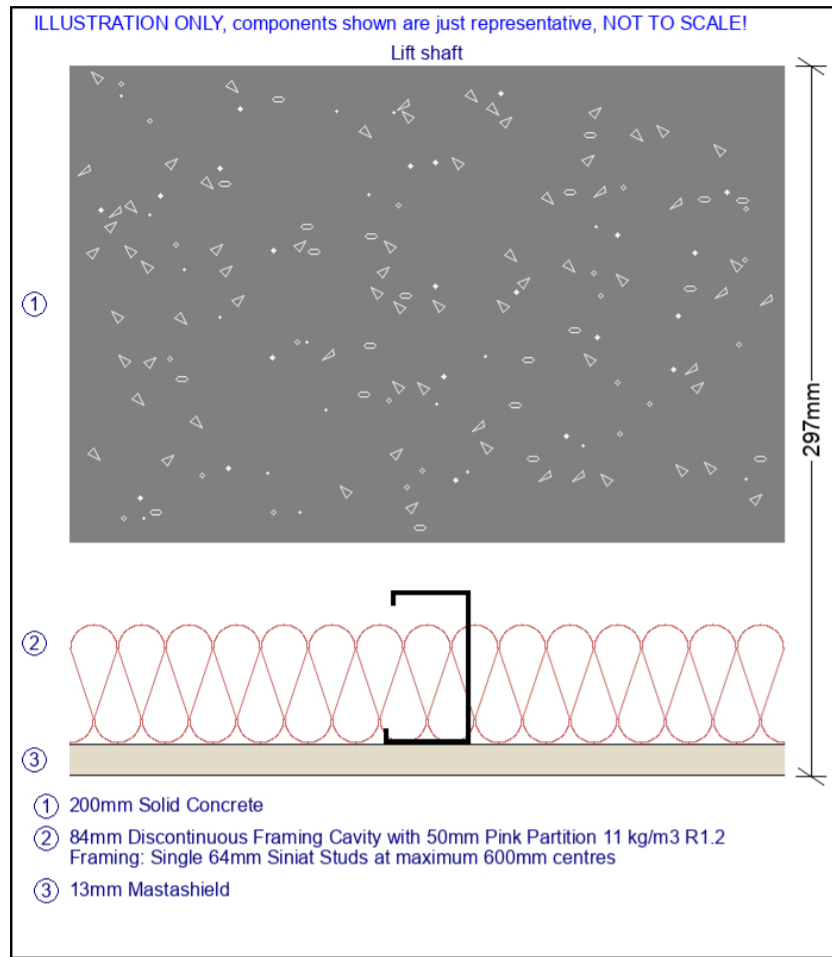
## Partition and Ceiling Information

Issue No.	4
Page No.	5/7
Updated by	Siniat Technical Services
Reviewed by	
Approved by	

22/09/2021

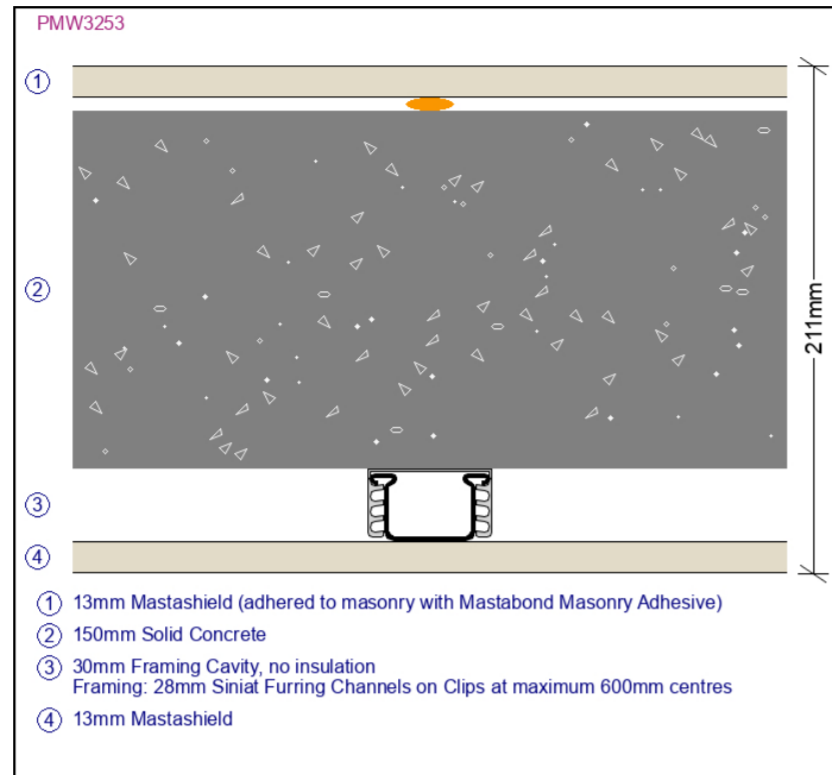
1. Siniat SELECT Project is a proposal only and is subject to the project/builder's approval as many aspects of construction are not comprehensively covered.
2. It is the responsibility of project certifier to determine if the specified products and performance properties including FRL, RISF, Rw, Rw + Ctr, Lnw and Total R-Value, etc. ratings are suitable for the intended applications.
3. For dimensions and performance properties of systems in this document that use products not manufactured or supplied by Etex Australia and branded Siniat, refer to the relevant product manufacturer.
4. In wet areas, replace Mastashield with Watershield, Soundshield with Trurock, and Fireshield with Trurock or Multishield of same thickness, and replace 10mm Opal with 13mm Watershield.
5. For enhanced impact resistance, replace any plasterboard with Trurock of same thickness.
6. For framing design of internal steel walls and ceilings, refer to the framing tables in the Siniat Blueprint. For framing design of external steel walls and ceilings, please contact Siniat Engineering Services.
7. The Insulation Pathway Total R-Value of a system provided in this document is a sum of the thermal resistances (R-Values) of the individual component layers in a composite element including any building material, insulating material, airspace and associated surface resistances. It is an estimate only, calculated along the insulation pathway without taking into account the thermal bridging effects of framing components and may not comply to the Section J of Building Code of Australia, NCC 2019 Volume One. It is also only valid for summer heat flow (mean temperature of 23°C).

#34: Lift Shaft Wall NCC-C3-LB-1



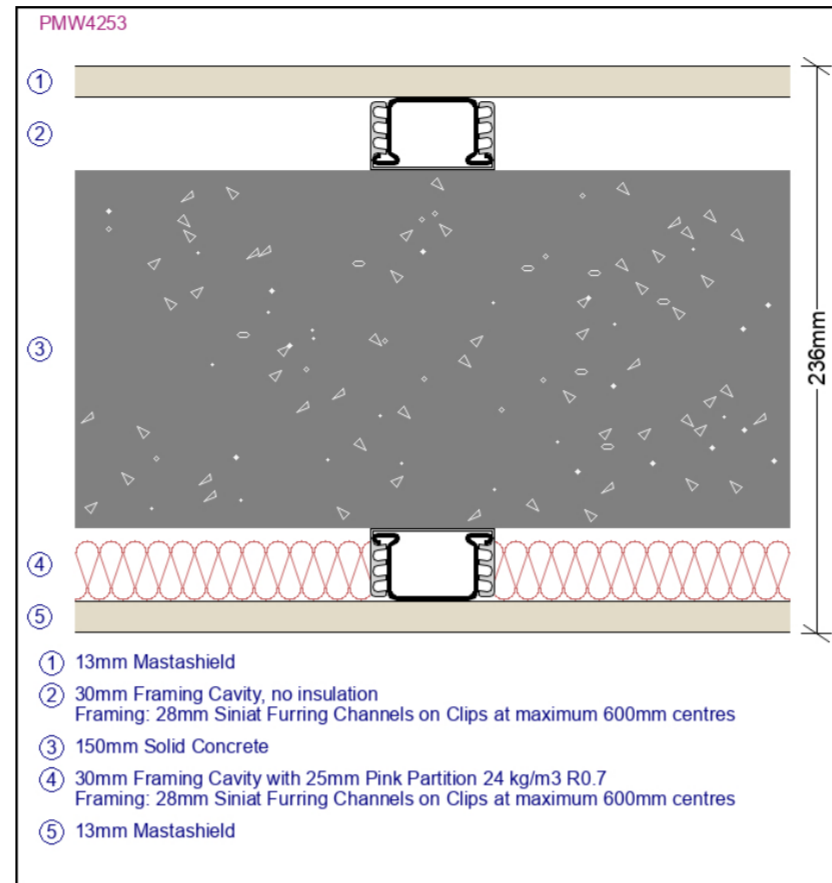
Rated from both sides; FRL from Both Sides: Masonry FRL  
Rw: 59; Rw + Ctr: 52; Discontinuous Construction  
Insulation Pathway Total R-Value (note 7): 1.57 m2.K/W

#35: Stair Shaft Wall NCC-C3-LB-1



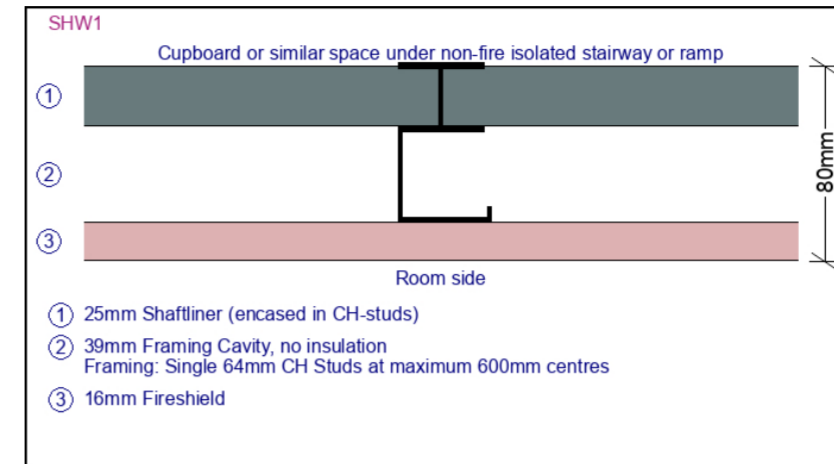
Rated from both sides; FRL from Both Sides: Masonry FRL  
Rw: 50; Rw + Ctr: 44  
Insulation Pathway Total R-Value (note 7): 0.42 m2.K/W

#36: Stair Shaft Wall NCC-C3-LB-2



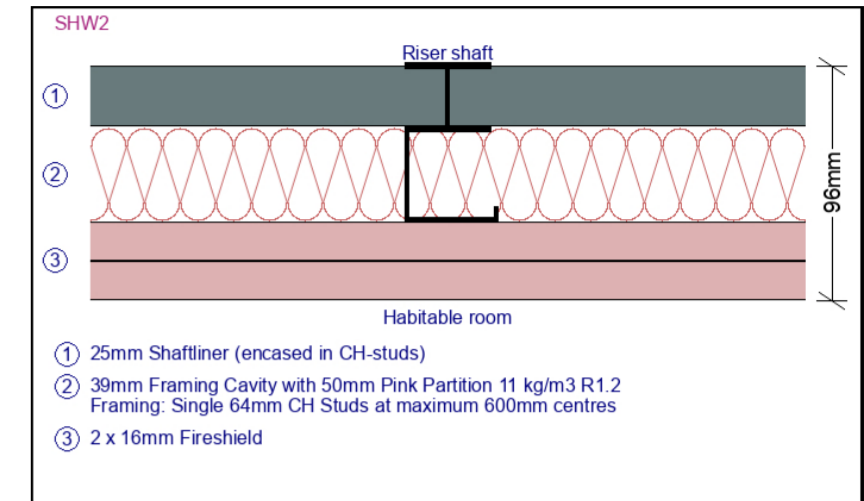
Rated from both sides; FRL from Both Sides: Masonry FRL  
Rw: 57; Rw + Ctr: 47  
Insulation Pathway Total R-Value (note 7): 1.12 m2.K/W

#37: Cupboard Shaft Wall NCC-C3-NLB-1



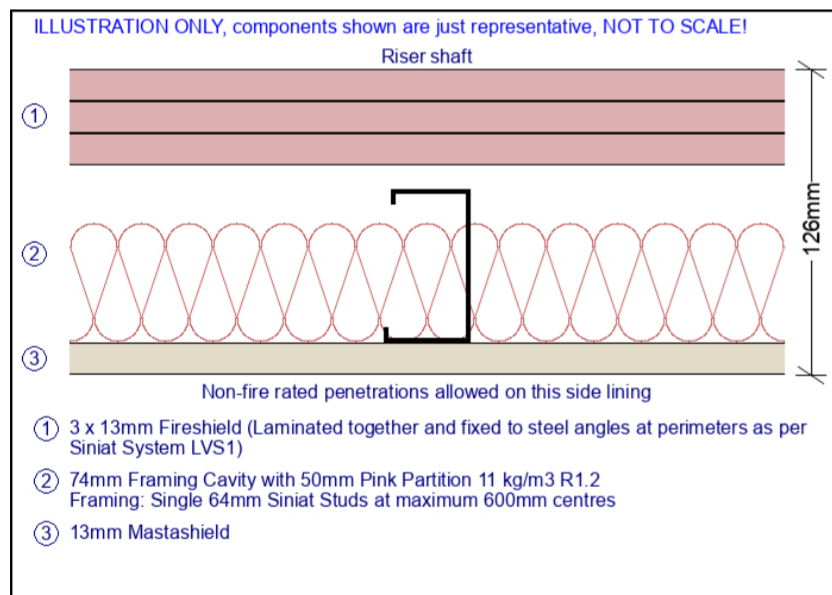
Rated from both sides; Non-Load Bearing FRL: -/60/60  
Rw: 39; Rw + Ctr: 32  
Insulation Pathway Total R-Value (note 7): 0.4 m2.K/W

#38: Riser Shaft Wall NCC-C3-NLB-A1-1



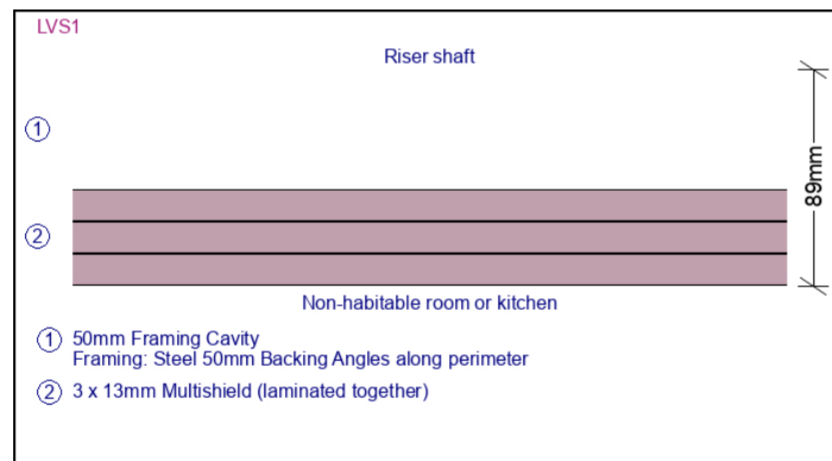
Rated from both sides; Non-Load Bearing FRL: -/120/120  
Rw: 50; Rw + Ctr: 42  
Insulation Pathway Total R-Value (note 7): 1.57 m2.K/W

#39: Riser Shaft Wall NCC-C3-NLB-A1-2



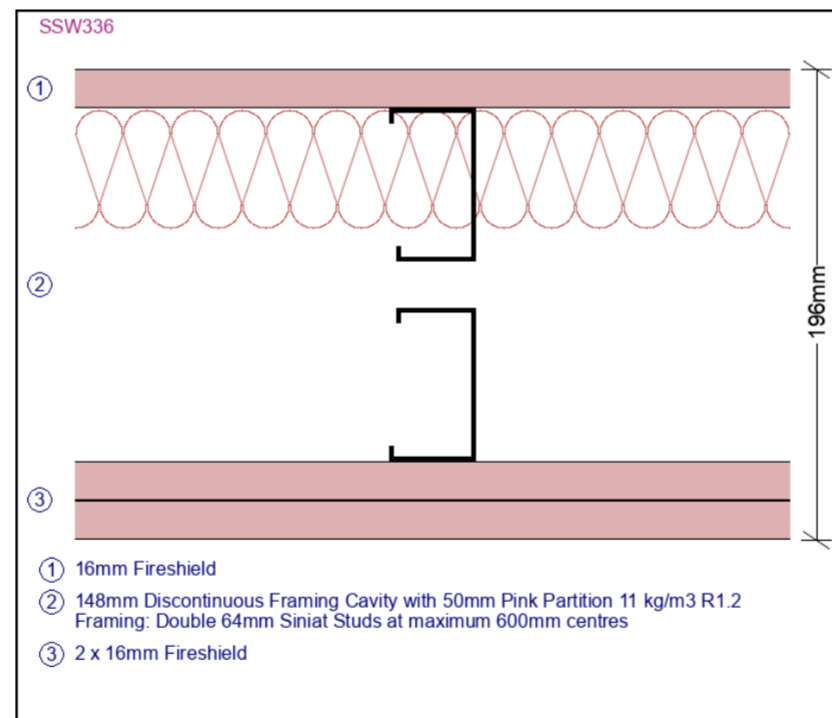
Rated from both sides; FRL1: -/90/90  
Rw: 53; Rw + Ctr: 41  
Insulation Pathway Total R-Value (note 7): 1.67 m2.K/W

#40: Riser Shaft Wall NCC-C3-NLB-A2-1



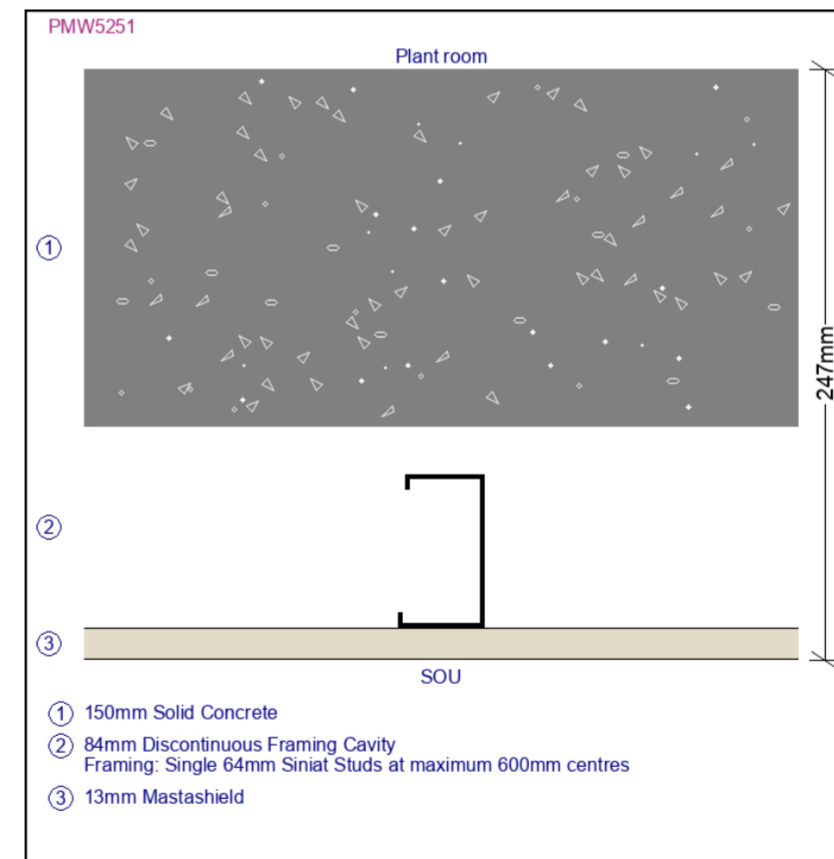
Rated from both sides; FRL: -/90/90  
Rw: 37; Rw + Ctr: 34  
Insulation Pathway Total R-Value (note 7): 0.39 m2.K/W

#41: Plant Room Wall NCC-C3-NLB-1



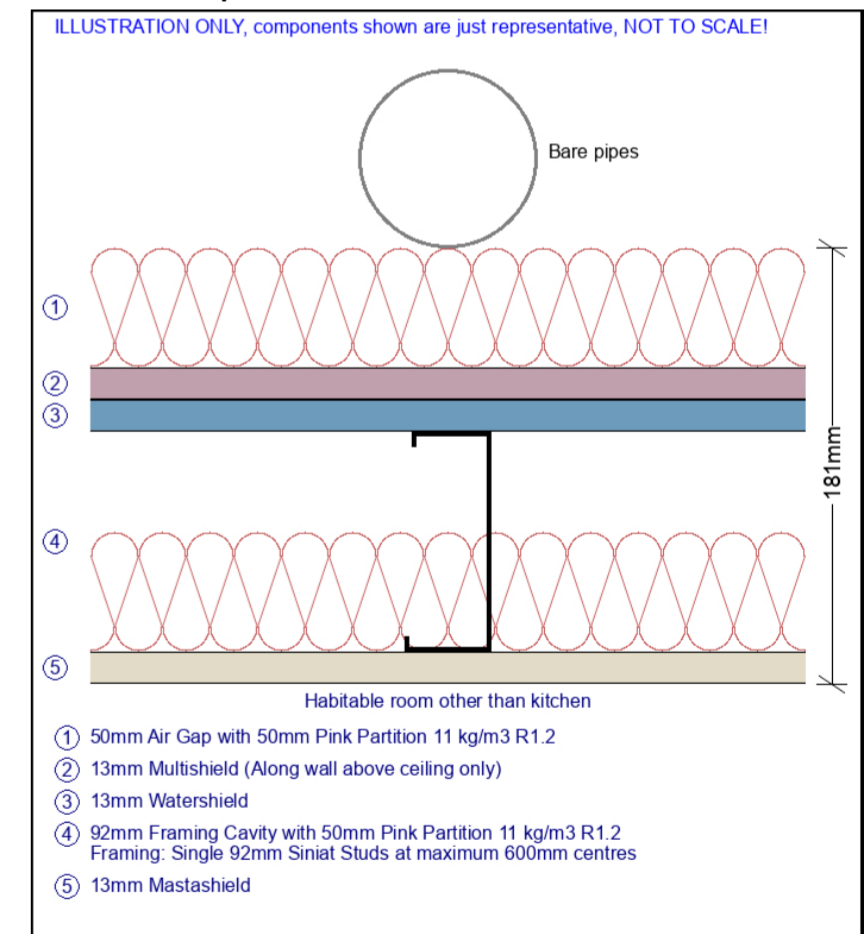
Rated from both sides; Non-Load Bearing FRL: -/120/120; Load Bearing FRL: 60/60/60  
Rw: 59; Rw + Ctr: 48; Discontinuous Construction  
Insulation Pathway Total R-Value (note 7): 1.64 m2.K/W

#42: Plant Room Wall NCC-C3-LB-1



Rated from both sides; FRL from Both Sides: Masonry FRL  
Rw: 52; Rw + Ctr: 46; Discontinuous Construction  
Insulation Pathway Total R-Value (note 7): 0.5 m2.K/W

#43: Waste Pipe Wall NCC-C3-NLB-A1



Rw: 48; Rw + Ctr: 40  
Insulation Pathway Total R-Value (note 7): 2.79 m2.K/W

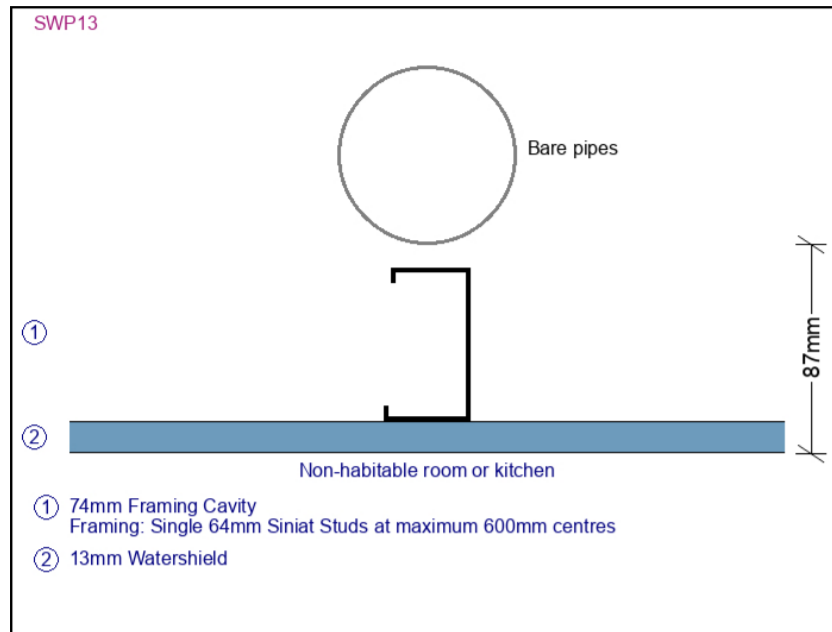
## Partition and Ceiling Information

Issue No.	4
Page No.	6/7
Updated by	Siniat Technical Services
Reviewed by	
Approved by	

22/09/2021

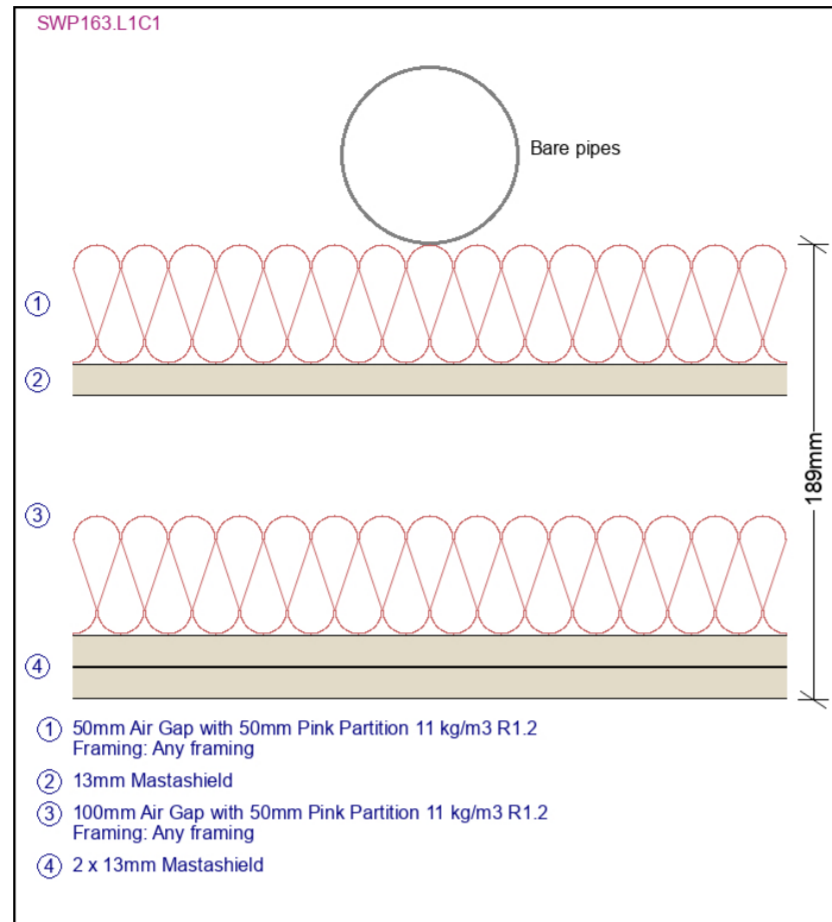
1. Siniat SELECT Project is a proposal only and is subject to the project/builder's approval as many aspects of construction are not comprehensively covered.
2. It is the responsibility of project certifier to determine if the specified products and performance properties including FRL, RISF, Rw, Rw + Ctr, Lnw and Total R-Value, etc. ratings are suitable for the intended applications.
3. For dimensions and performance properties of systems in this document that use products not manufactured or supplied by Etex Australia and branded Siniat, refer to the relevant product manufacturer.
4. In wet areas, replace Mastashield with Watershield, Soundshield with Trurock, and Fireshield with Trurock or Multishield of same thickness, and replace 10mm Opal with 13mm Watershield.
5. For enhanced impact resistance, replace any plasterboard with Trurock of same thickness.
6. For framing design of internal steel walls and ceilings, refer to the framing tables in the Siniat Blueprint. For framing design of external steel walls and ceilings, please contact Siniat Engineering Services.
7. The Insulation Pathway Total R-Value of a system provided in this document is a sum of the thermal resistances (R-Values) of the individual component layers in a composite element including any building material, insulating material, airspace and associated surface resistances. It is an estimate only, calculated along the insulation pathway without taking into account the thermal bridging effects of framing components and may not comply to the Section J of Building Code of Australia, NCC 2019 Volume One. It is also only valid for summer heat flow (mean temperature of 23°C).

#44: Waste Pipe Wall NCC-C3-NLB-A2



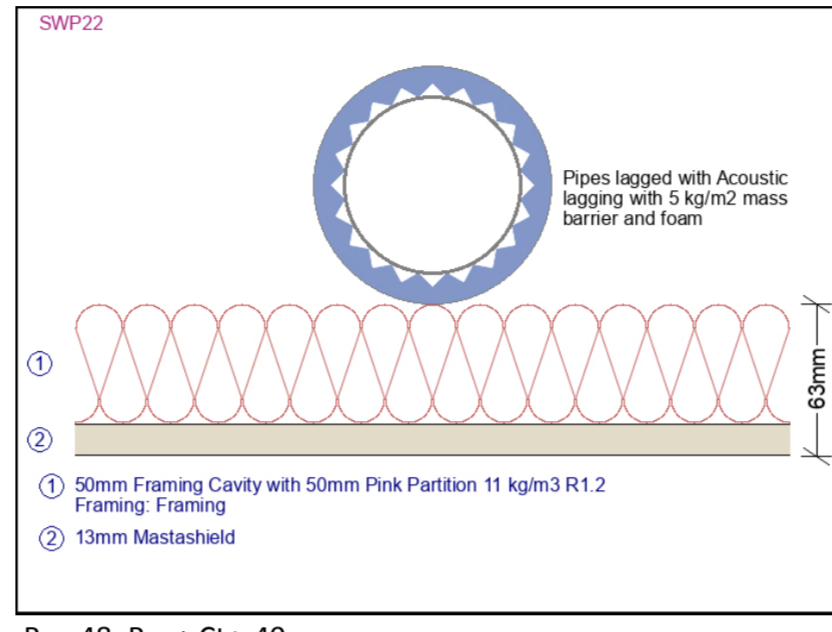
Rw: 29; Rw + Ctr: 26  
Insulation Pathway Total R-Value (note 7): 0.24 m2.K/W

#45: Waste Pipe Ceiling NCC-C3-A1-1



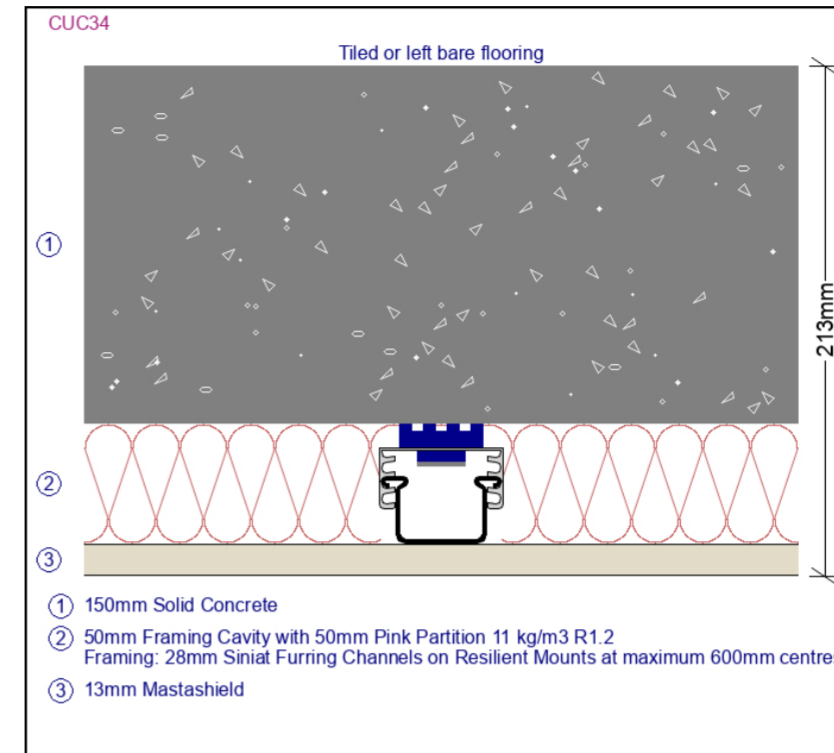
Rw: 54; Rw + Ctr: 41

#46: Waste Pipe Ceiling NCC-C3-A1-2



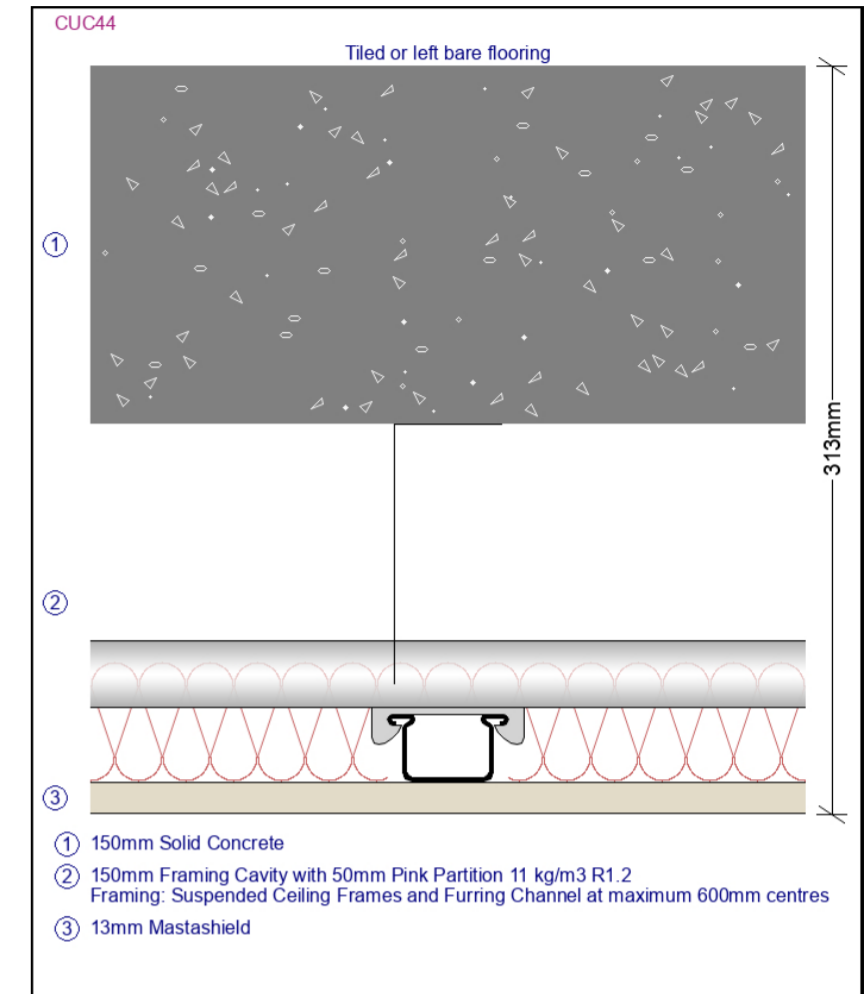
Rw: 48; Rw + Ctr: 40

#47: Separating Floor NCC-C3-LB-1



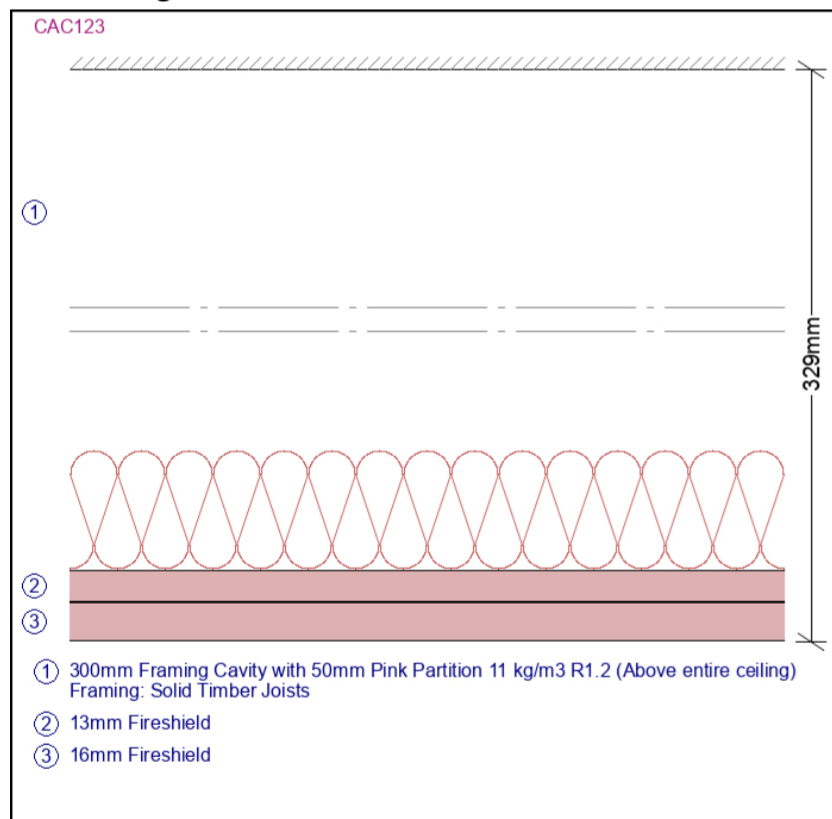
Rw: 62; Rw + Ctr: 52; Ln,w: 62

#48: Separating Floor NCC-C3-LB-2



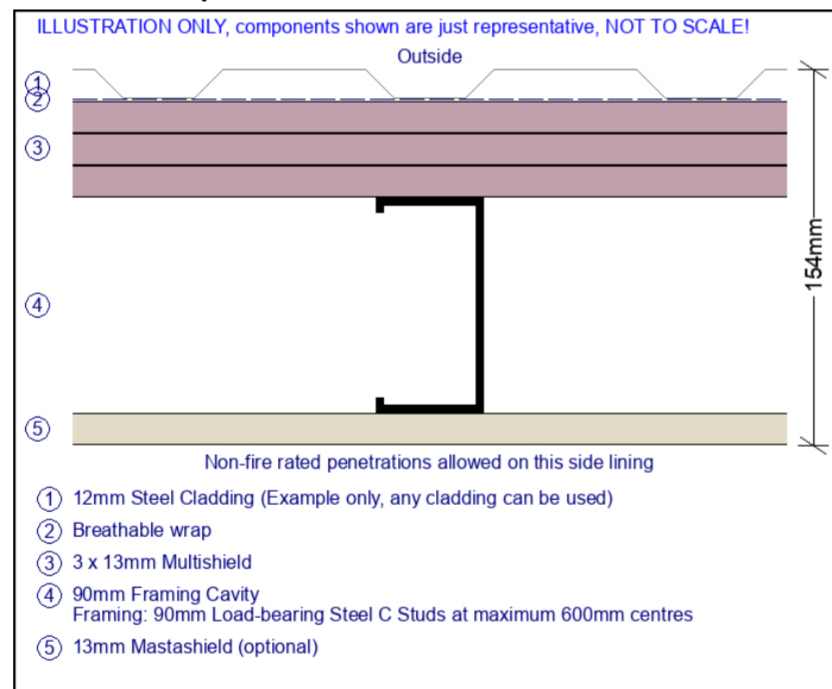
Rw: 63; Rw + Ctr: 52; Ln,w: 61

#49: Ceiling Under Roof NCC-C3-LB-1



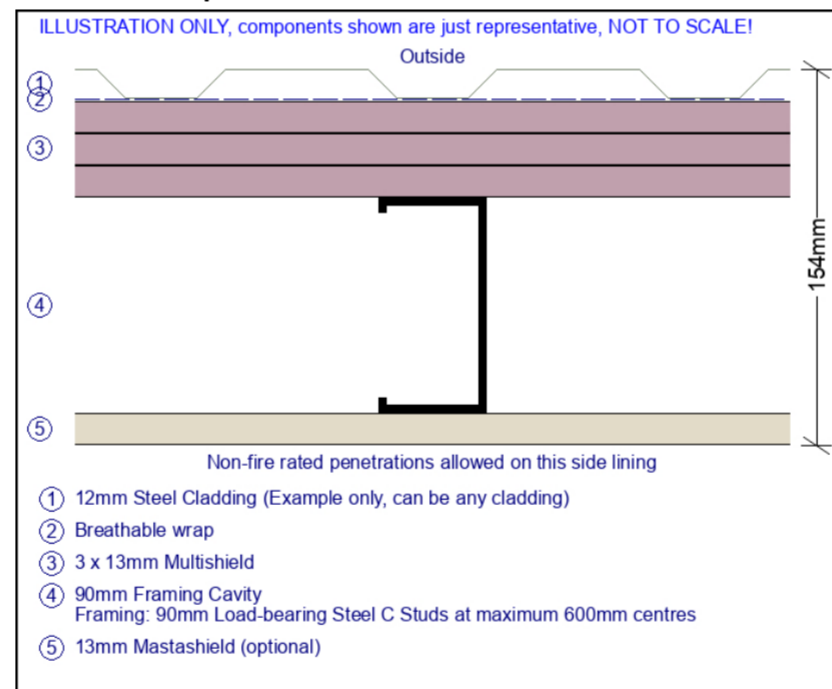
Rated from below only; RISF: 60  
Rw: 59; Rw + Ctr: 50

#50: Fire Escape Wall NCC-C3-LB-1



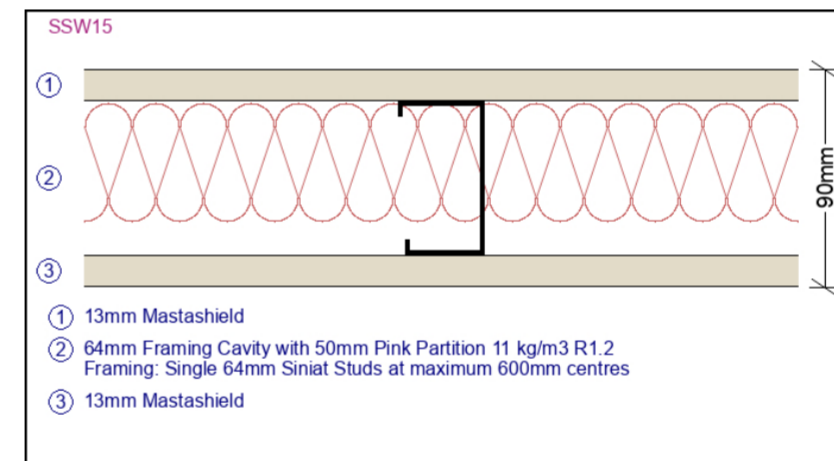
Rated from outside only; FRL From Outside Only: 90/90/90  
Insulation Pathway Total R-Value (note 7): 0.63 m2.K/W

#51: Fire Escape Roof NCC-C3-LB-1



Rated from outside only; FRL: 90/90/90

#52: Partition Wall NCC-C3-NLB-1



Rw: 42; Rw + Ctr: 33  
Insulation Pathway Total R-Value (note 7): 1.51 m2.K/W

## Partition and Ceiling Information

Issue No.	4
Page No.	7/7
Updated by	Siniat Technical Services
Reviewed by	
Approved by	

22/09/2021

1. Siniat SELECT Project is a proposal only and is subject to the project/builder's approval as many aspects of construction are not comprehensively covered.
2. It is the responsibility of project certifier to determine if the specified products and performance properties including FRL, RISF, Rw, Rw + Ctr, Ln,w and Total R-Value, etc. ratings are suitable for the intended applications.
3. For dimensions and performance properties of systems in this document that use products not manufactured or supplied by Etex Australia and branded Siniat, refer to the relevant product manufacturer.
4. In wet areas, replace Mastashield with Watershield, Soundshield with Trurock, and Fireshield with Trurock or Multishield of same thickness, and replace 10mm Opal with 13mm Watershield.
5. For enhanced impact resistance, replace any plasterboard with Trurock of same thickness.
6. For framing design of internal steel walls and ceilings, refer to the framing tables in the Siniat Blueprint. For framing design of external steel walls and ceilings, please contact Siniat Engineering Services.
7. The Insulation Pathway Total R-Value of a system provided in this document is a sum of the thermal resistances (R-Values) of the individual component layers in a composite element including any building material, insulating material, airspace and associated surface resistances. It is an estimate only, calculated along the insulation pathway without taking into account the thermal bridging effects of framing components and may not comply to the Section J of Building Code of Australia, NCC 2019 Volume One. It is also only valid for summer heat flow (mean temperature of 23°C).