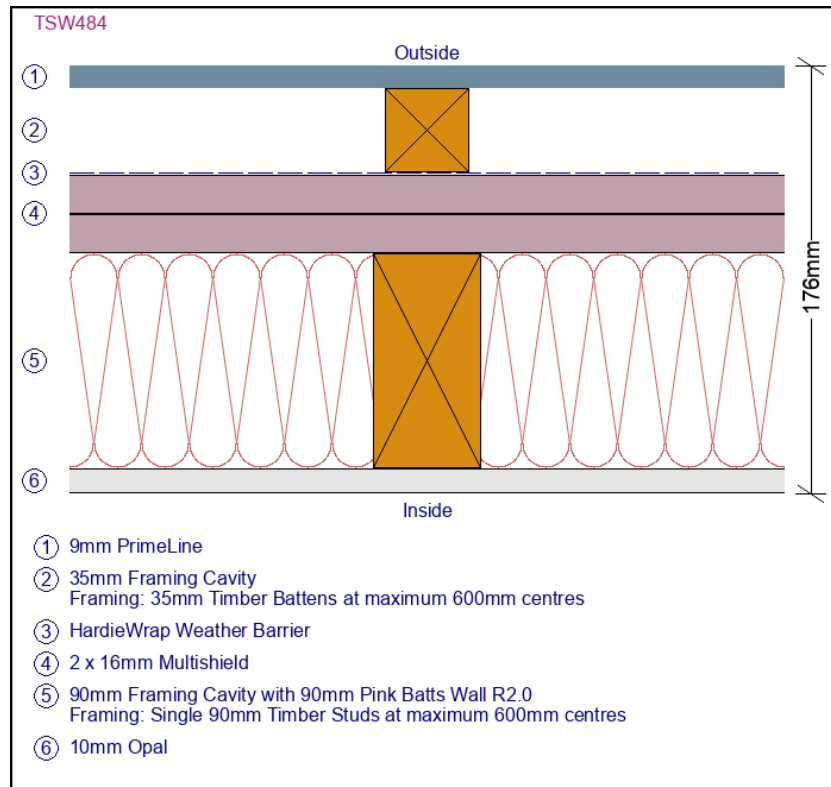
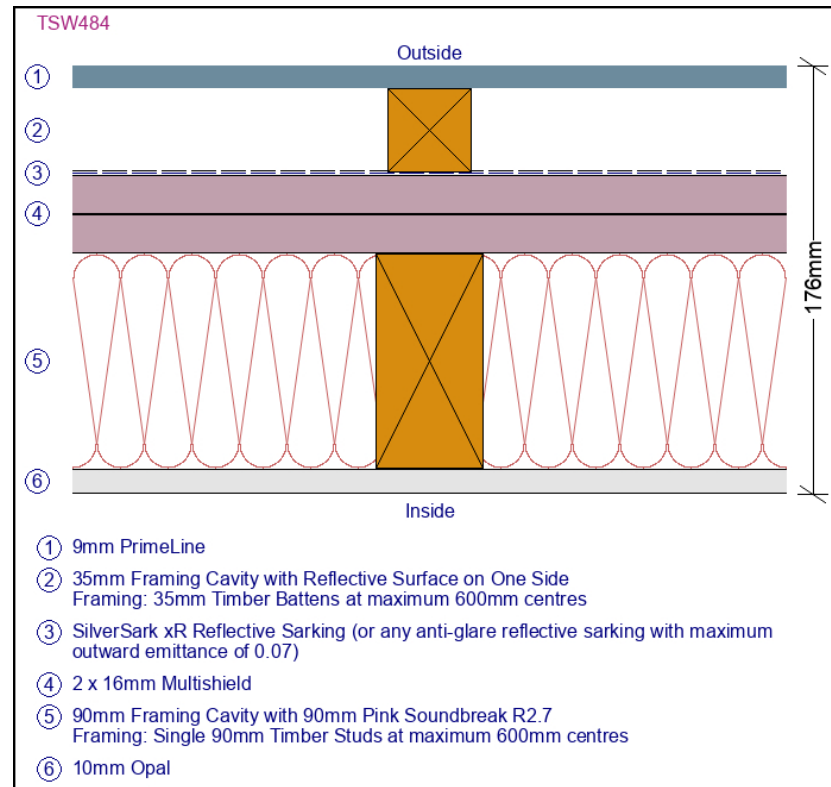


#1: External Wall NCC-C9c-LB-F1R1



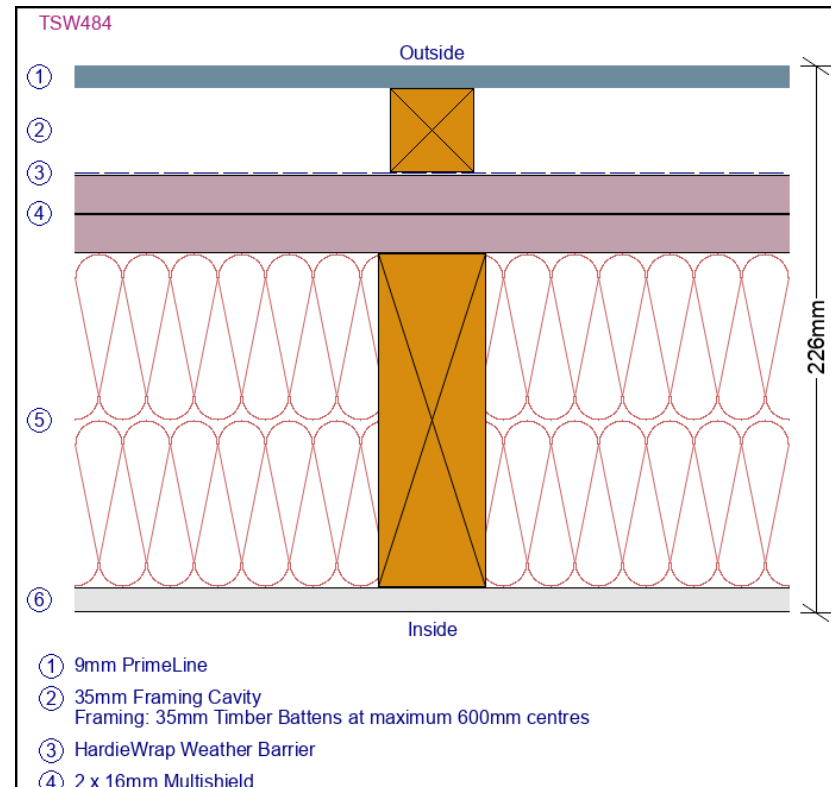
Rated from outside only; FRL From Outside Only: 90/90/90  
 Rw: 50; Rw + Ctr: 42  
 Insulation Pathway Total R-Value (note 7): 2.61 m2.K/W

#2: External Wall NCC-c9c-LB-F1R2



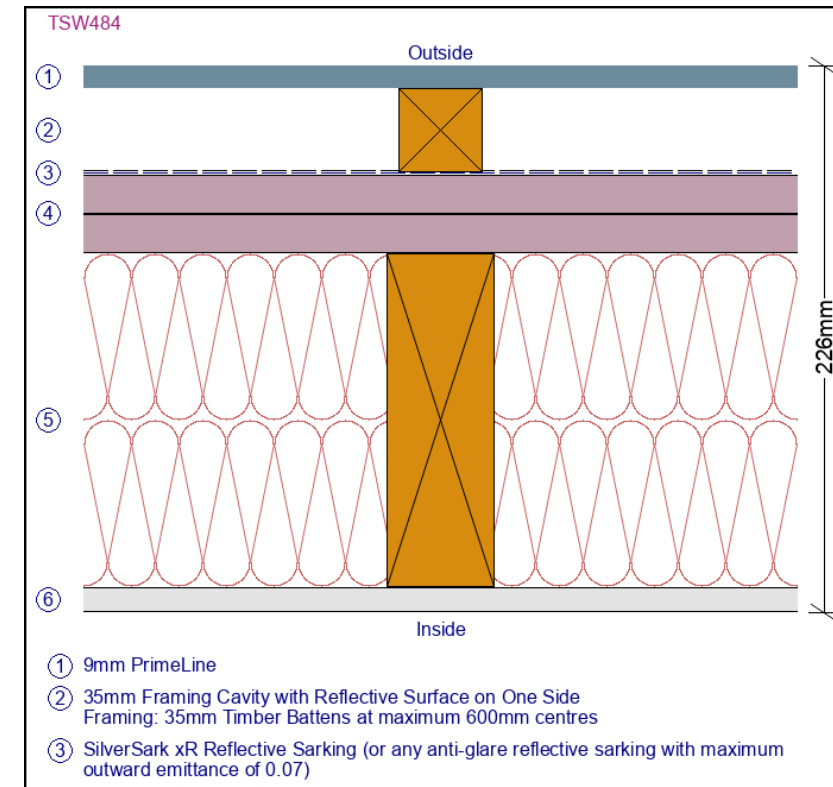
Rated from outside only; FRL From Outside Only: 90/90/90  
 Rw: 50; Rw + Ctr: 42  
 Insulation Pathway Total R-Value (note 7): 3.79 m2.K/W

#3: External Wall NCC-C9c-LB-F1R3



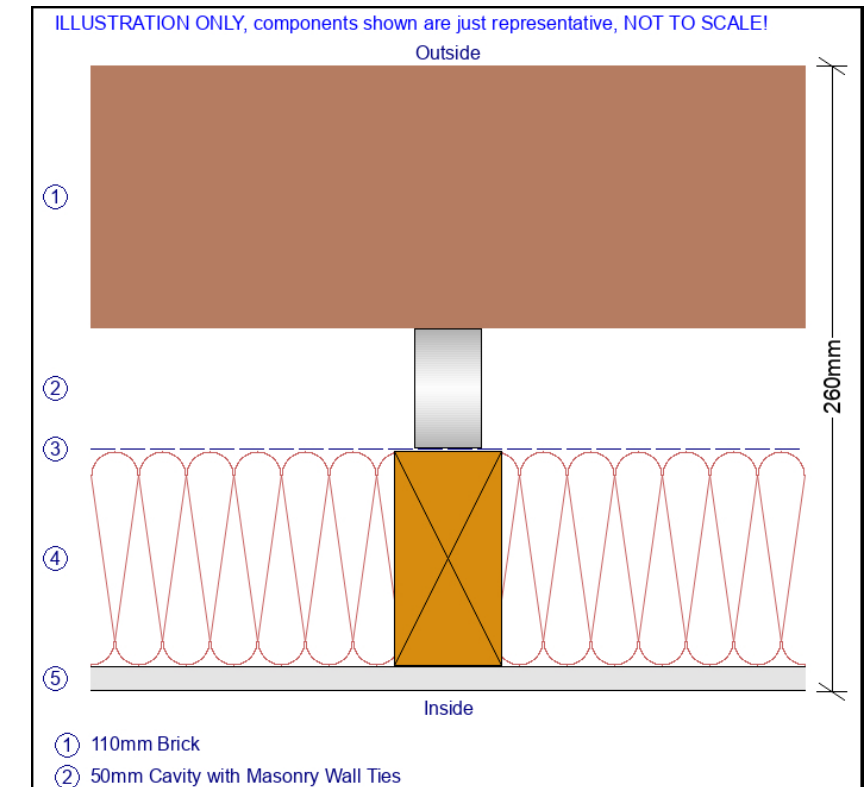
Rated from outside only; FRL From Outside Only: 90/90/90  
 Rw: 50; Rw + Ctr: 42  
 Insulation Pathway Total R-Value (note 7): 4.61 m2.K/W

#4: External Wall NCC-C9c-LB-F1R4



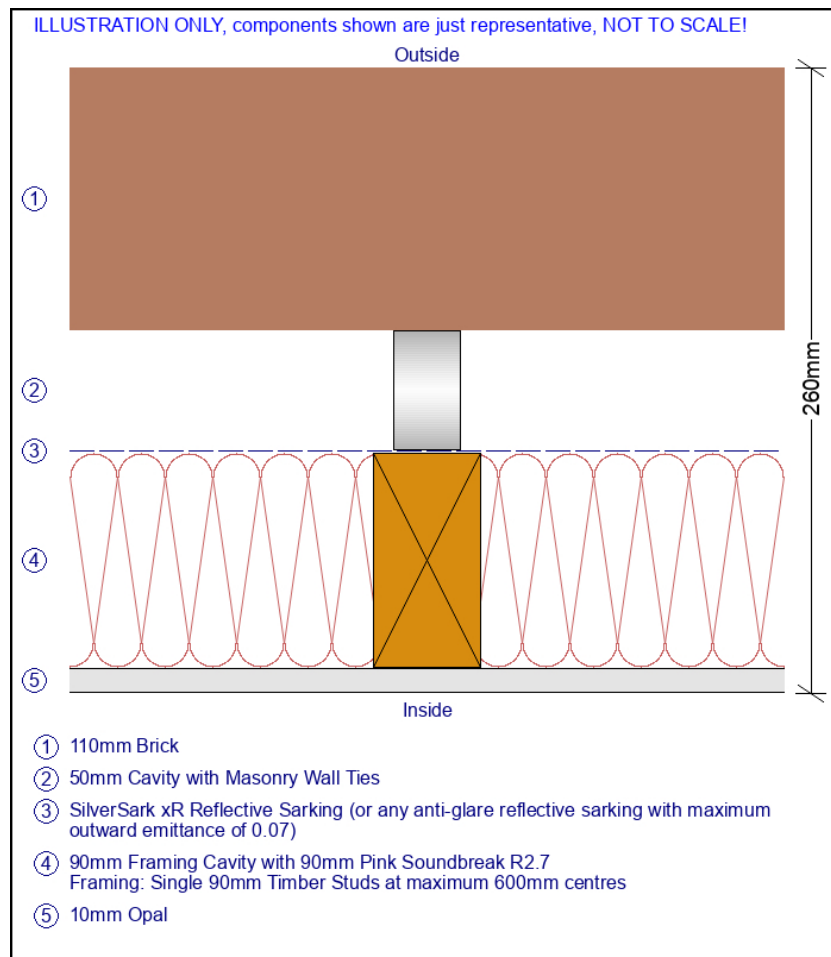
Rated from outside only; FRL with contribution of internal wall lining: 90/90/90; FRL without contribution of internal wall lining: 60/60/60; FRL3: 90/90/90  
 Rw: 50; Rw + Ctr: 42  
 Insulation Pathway Total R-Value (note 7): 5.09 m2.K/W

#5: External Wall NCC-C9c-LB-R1



Rated from outside only; FRL: Masonry FRL  
 Rw: 57; Rw + Ctr: 53  
 Insulation Pathway Total R-Value (note 7): 2.5 m2.K/W

#6: External Wall NCC-C9c-LB-R2



Rated from outside only; FRL: Masonry FRL  
 Rw: 57; Rw + Ctr: 54  
 Insulation Pathway Total R-Value (note 7): 3.2 m2.K/W

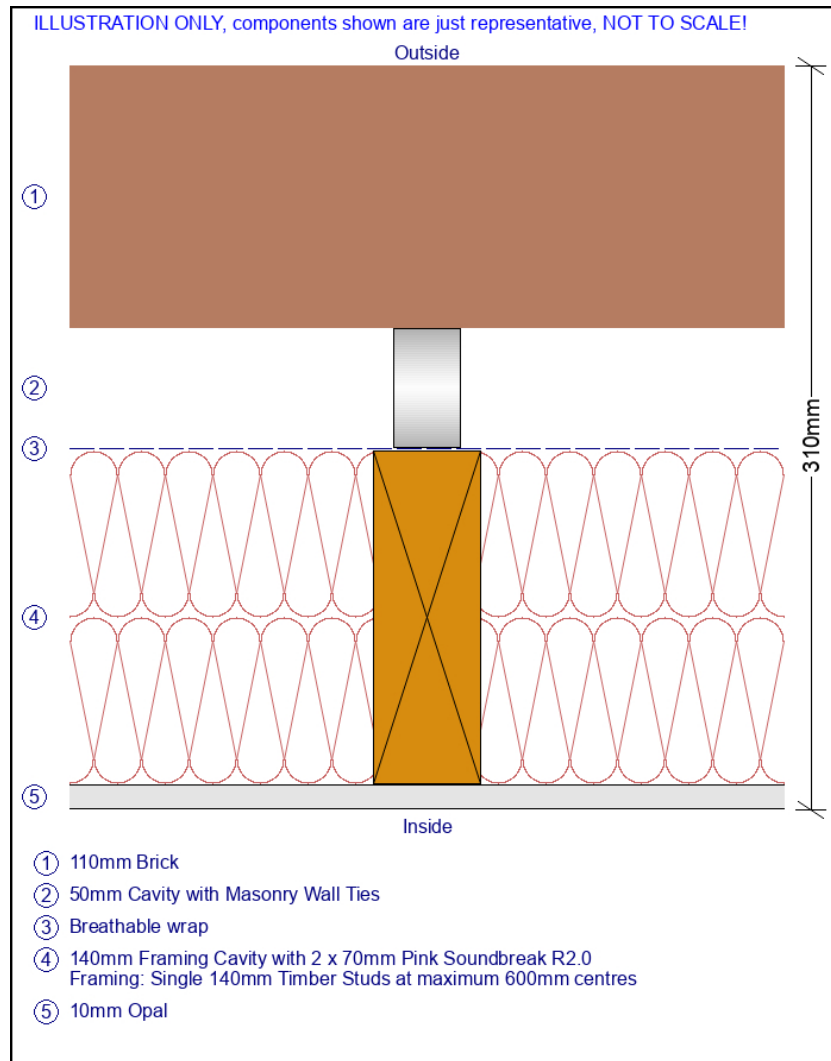
### Partition and Ceiling Information

Issue No.	3
Page No.	1/2
Updated by	Siniat Technical Services
Reviewed by	
Approved by	

16/09/2021

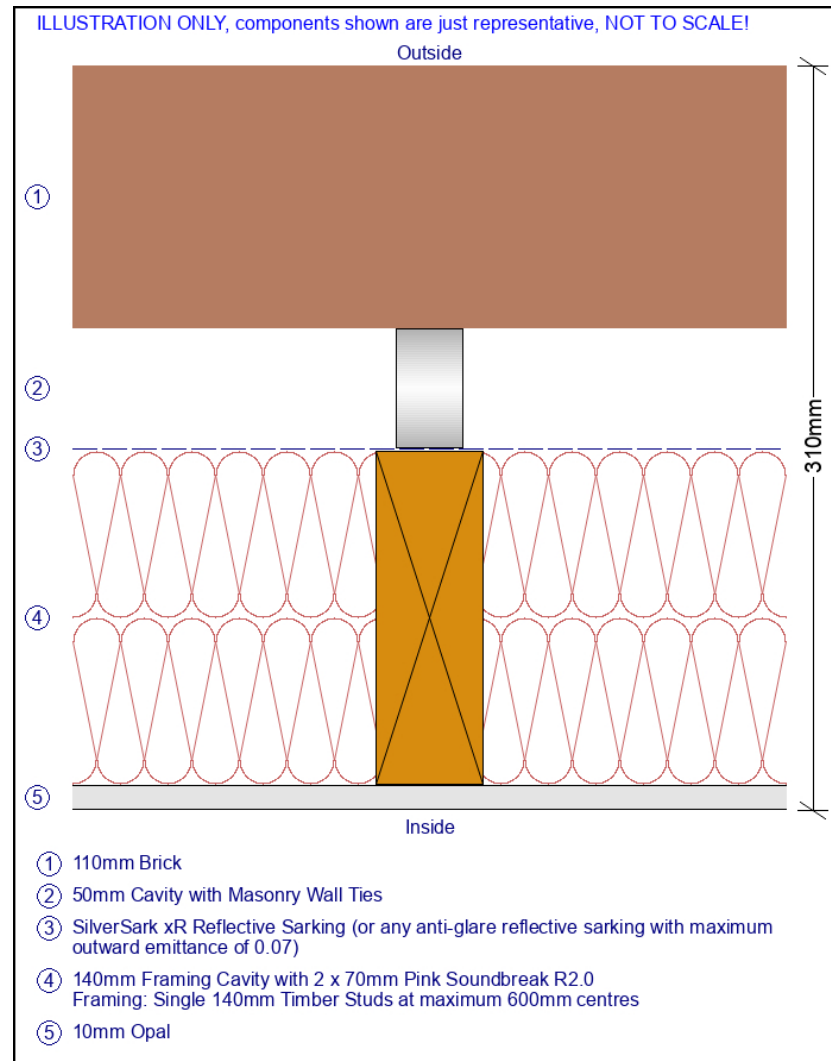
- Siniat SELECT Project is a proposal only and is subject to the project/builder's approval as many aspects of construction are not comprehensively covered.
- It is the responsibility of project certifier to determine if the specified products and performance properties including FRL, RISF, Rw, Rw + Ctr, Lnw and Total R-Value, etc. ratings are suitable for the intended applications.
- For dimensions and performance properties of systems in this document that use products not manufactured or supplied by Etex Australia and branded Siniat, refer to the relevant product manufacturer.
- In wet areas, replace Mastashield with Watershield, Soundshield with Trurock, and Fireshield with Trurock or Multishield of same thickness, and replace 10mm Opal with 13mm Watershield.
- For enhanced impact resistance, replace any plasterboard with Trurock of same thickness.
- For framing design of internal steel walls and ceilings, refer to the framing tables in the Siniat Blueprint. For framing design of external steel walls and ceilings, please contact Siniat Engineering Services.
- The Insulation Pathway Total R-Value of a system provided in this document is a sum of the thermal resistances (R-Values) of the individual component layers in a composite element including any building material, insulating material, airspace and associated surface resistances. It is an estimate only, calculated along the insulation pathway without taking into account the thermal bridging effects of framing components and may not comply to the Section J of Building Code of Australia, NCC 2019 Volume One. It is also only valid for summer heat flow (mean temperature of 23°C).

**#7: External Wall NCC-C9c-LB-R3**



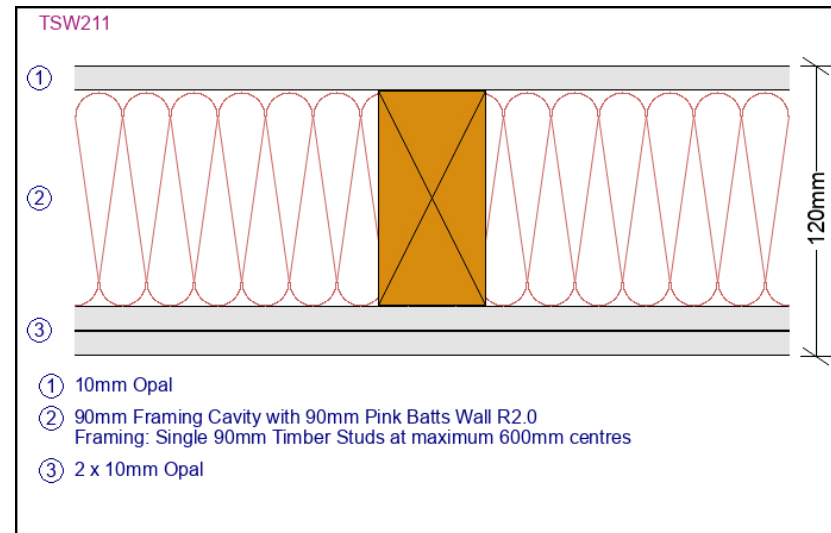
Rw: 57; Rw + Ctr: 54  
Insulation Pathway Total R-Value (note 7): 4.5 m2.K/W

**#8: External Wall NCC-C9c-LB-R4**



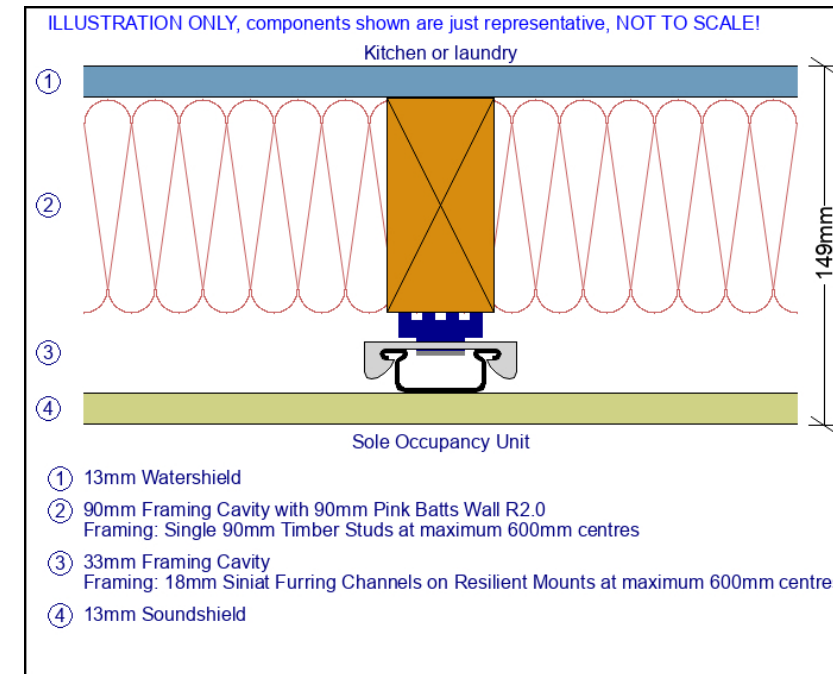
Rated from outside only; FRL: Masonry FRL  
Rw: 57; Rw + Ctr: 54  
Insulation Pathway Total R-Value (note 7): 4.5 m2.K/W

**#9: Separating Wall NCC-C9c-LB-A1**



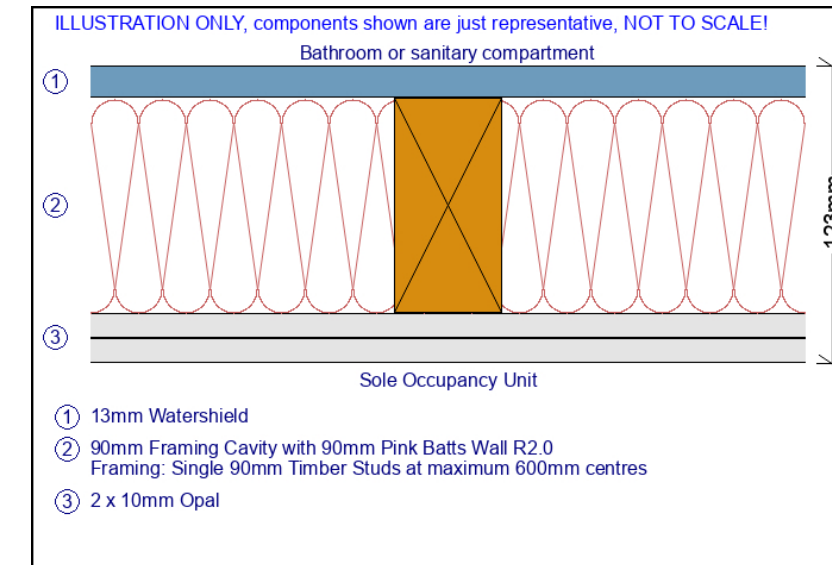
Rw: 45; Rw + Ctr: 38  
Insulation Pathway Total R-Value (note 7): 2.34 m2.K/W

**#10: Separating Wall NCC-C9c-LB-A2**



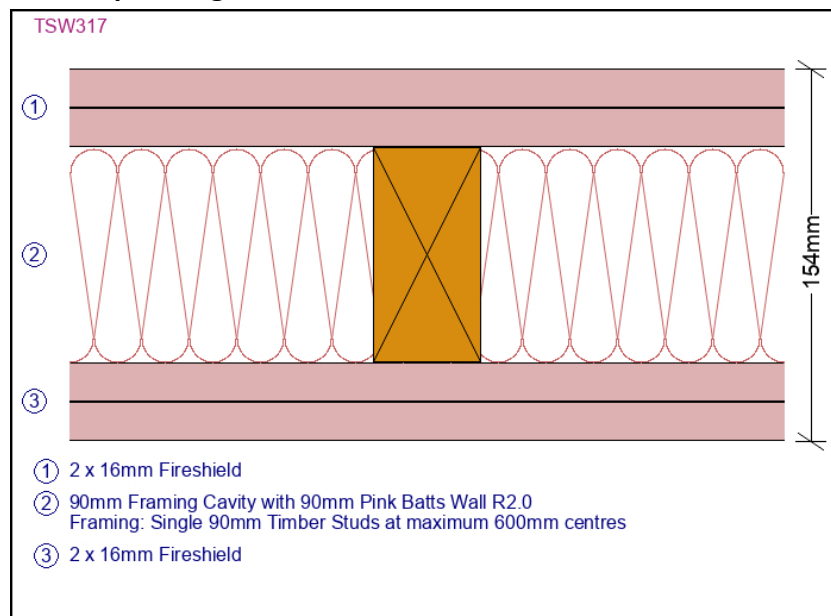
Rw: 47; Rw + Ctr: 36; Impact Sound Resistant  
Insulation Pathway Total R-Value (note 7): 2.31 m2.K/W

**#11: Separating Wall NCC-C9c-LB-A1-2**



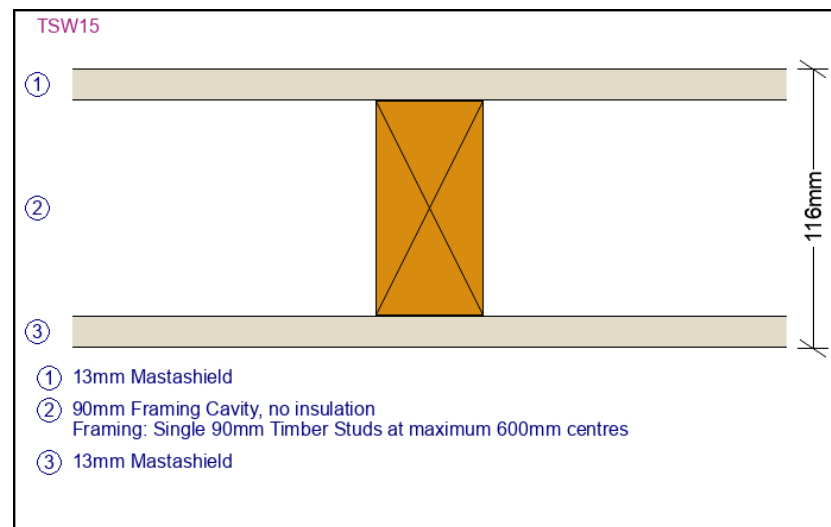
Rw: 45; Rw + Ctr: 38  
Insulation Pathway Total R-Value (note 7): 2.35 m2.K/W

**#12: Separating Wall NCC-C9c-LB-F1A1**



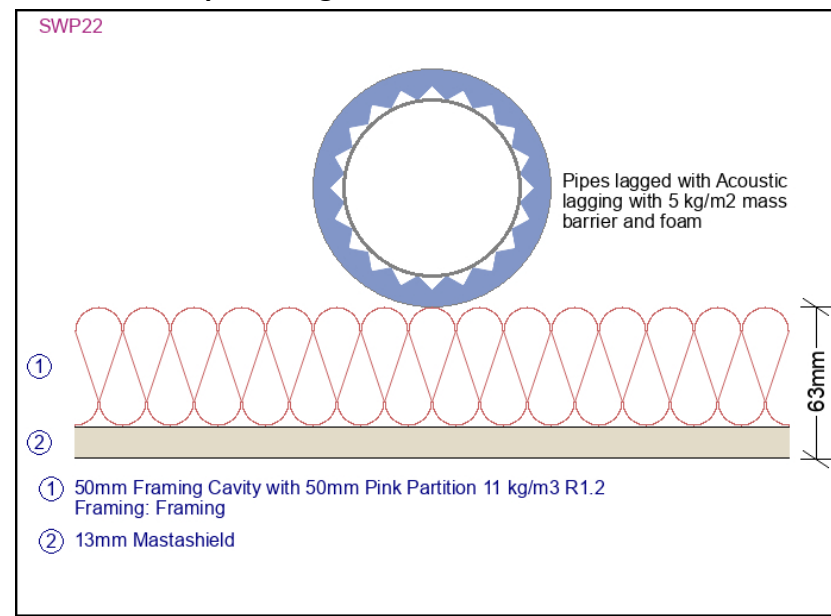
Rated from both sides; Non-Load Bearing FRL: -/120/120; Load Bearing FRL: 120/120/120  
Rw: 48; Rw + Ctr: 44  
Insulation Pathway Total R-Value (note 7): 2.54 m2.K/W

**#13: Smoke Wall NCC-C9c-LB-S**



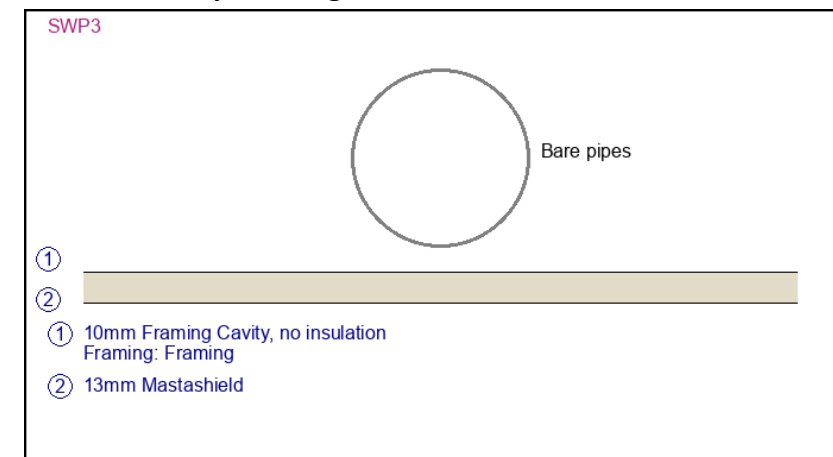
Rw: 35; Rw + Ctr: 27  
Insulation Pathway Total R-Value (note 7): 0.31 m2.K/W

**#14: Waste Pipe Ceiling NCC-C9c-A1**



Rw: 48; Rw + Ctr: 40

**#15: Waste Pipe Ceiling NCC-C9c-A2**



Rw: 29; Rw + Ctr: 25

### Partition and Ceiling Information

Issue No.	3
Page No.	2/2
Updated by	Siniat Technical Services
Reviewed by	
Approved by	
16/09/2021	

1. Siniat SELECT Project is a proposal only and is subject to the project/builder's approval as many aspects of construction are not comprehensively covered.
2. It is the responsibility of project certifier to determine if the specified products and performance properties including FRL, RISF, Rw, Rw + Ctr, Lnw and Total R-Value, etc. ratings are suitable for the intended applications.
3. For dimensions and performance properties of systems in this document that use products not manufactured or supplied by Etex Australia and branded Siniat, refer to the relevant product manufacturer.
4. In wet areas, replace Mastashield with Watershield, Soundshield with Trurock, and Fireshield with Trurock or Multishield of same thickness, and replace 10mm Opal with 13mm Watershield.
5. For enhanced impact resistance, replace any plasterboard with Trurock of same thickness.
6. For framing design of internal steel walls and ceilings, refer to the framing tables in the Siniat Blueprint. For framing design of external steel walls and ceilings, please contact Siniat Engineering Services.
7. The Insulation Pathway Total R-Value of a system provided in this document is a sum of the thermal resistances (R-Values) of the individual component layers in a composite element including any building material, insulating material, airspace and associated surface resistances. It is an estimate only, calculated along the insulation pathway without taking into account the thermal bridging effects of framing components and may not comply to the Section J of Building Code of Australia, NCC 2019 Volume One. It is also only valid for summer heat flow (mean temperature of 23°C).